

Datasheet for ABIN2469323

**anti-PTPRM antibody (Internal Region)**[Go to Product page](#)**1** Image

## Overview

|                      |   |
|----------------------|---|
| Quantity:            | 0.05 mg   |
| Target:              | PTPRM   |
| Binding Specificity: | Internal Region                                   |
| Reactivity:          | Human, Mouse, Rat, Rabbit, Horse, Hamster, Gibbon |
| Host:                | Rabbit  |
| Clonality:           | Polyclonal  |
| Conjugate:           | This PTPRM antibody is un-conjugated              |
| Application:         | Immunohistochemistry (IHC)                        |

## Product Details

|               |  |
|---------------|--|
| Immunogen:    | PTPRM antibody was raised against a peptide located near the internal domain of PTPRM (Human). |
| Specificity:  | BLAST analysis of the peptide immunogen showed no homology with other human proteins.          |
| Purification: | Immunoaffinity Chromatography  |

## Target Details

|                   |  |
|-------------------|--|
| Target:           | PTPRM  |
| Alternative Name: | PTPRM ( <a href="#">PTPRM Products</a> )   |
| Background:       | PTP mu, a R2A receptor protein tyrosine phosphatase, is composed of an extracellular segment containing a MAM domain, an immunoglobulin domain and four fibronectin type III repeats, a transmembrane segment, and two intracellular protein phosphatase domains. PTP mu has |

## Target Details

been shown to affect cell-cell aggregation, regulate cardiac myocyte Kv1.5 channel expression, and promote neurite outgrowth of retinal ganglion cells. The human PTP mu gene is localized on chromosome 18pter-q11, a region with frequent abnormalities implicated in human cancer. PTP mu may be important in responses to pathological conditions associated with the loss of cell-cell interactions in the heart.

Gene ID: 5797

UniProt: [P28827](#)

## Application Details

Application Notes: PTPRM antibody can be used in ELISA, Western Blot, and immunohistochemistry starting at 5 - 10 µg/mL.

Restrictions: For Research Use only

## Handling

Format: Liquid

Buffer: PBS, 0.1 % sodium azide.

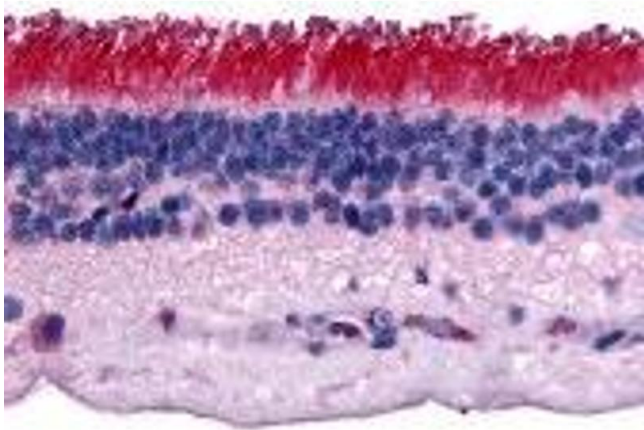
Preservative: Sodium azide

Precaution of Use: This product contains Sodium azide: a POISONOUS AND HAZARDOUS SUBSTANCE which should be handled by trained staff only.

Handling Advice: As with all antibodies avoid freeze/thaw cycles.

Storage: 4 °C/-80 °C

Storage Comment: PTPRM antibody should be stored long term (months) at -80 °C and short term (days) at 4 °C.



Immunohistochemistry

Image 1.