

Datasheet for ABIN2469335
anti-PTPMT1 antibody (N-Term)



[Go to Product page](#)

1 Image

Overview

Quantity:	0.05 mg
Target:	PTPMT1
Binding Specificity:	N-Term
Reactivity:	Human, Dog, Monkey, Gibbon, Gorilla
Host:	Rabbit
Clonality:	Polyclonal
Conjugate:	This PTPMT1 antibody is un-conjugated
Application:	Immunohistochemistry (IHC)

Product Details

Immunogen:	PTPMT1 antibody was raised against a peptide located in the N-Terminal region of PTPMT1 (Human).
Specificity:	BLAST analysis of the peptide immunogen showed no homology with other human proteins.
Purification:	Immunoaffinity Chromatography

Target Details

Target:	PTPMT1
Alternative Name:	PTPMT1 (PTPMT1 Products)
Background:	Provisional protein phosphatase.
Gene ID:	114971

Target Details

UniProt: [Q8WUK0](#)

Pathways: [Inositol Metabolic Process](#)

Application Details

Application Notes: PTPMT1 antibody can be used in Western Blot, immunohistochemistry starting at 10 µg/mL, and immunoprecipitation.

Restrictions: For Research Use only

Handling

Format: Liquid

Buffer: PBS, 0.1 % sodium azide.

Preservative: Sodium azide

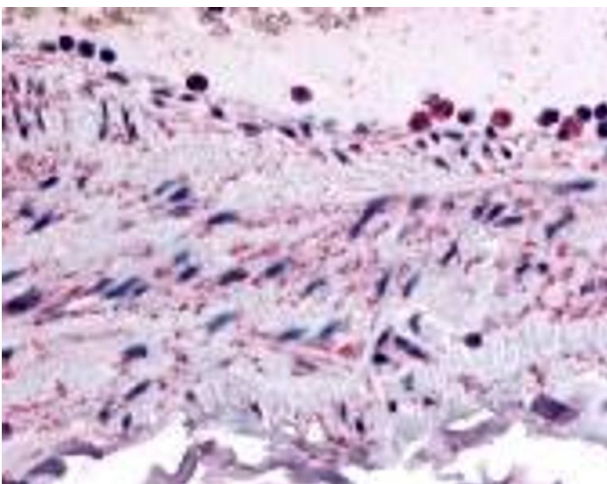
Precaution of Use: This product contains Sodium azide: a POISONOUS AND HAZARDOUS SUBSTANCE which should be handled by trained staff only.

Handling Advice: As with all antibodies avoid freeze/thaw cycles.

Storage: 4 °C/-80 °C

Storage Comment: PTPMT1 antibody should be stored long term (months) at -80 °C and short term (days) at 4 °C.

Images



Immunohistochemistry

Image 1.