

Datasheet for ABIN2469357
anti-INPP5J antibody (N-Term)



[Go to Product page](#)

1 Image

Overview

| | |
|----------------------|---------------------------------------|
| Quantity: | 0.05 mg |
| Target: | INPP5J |
| Binding Specificity: | N-Term |
| Reactivity: | Human, Gorilla |
| Host: | Rabbit |
| Clonality: | Polyclonal |
| Conjugate: | This INPP5J antibody is un-conjugated |
| Application: | Immunohistochemistry (IHC) |

Product Details

| | |
|---------------|--|
| Immunogen: | PIB5PA antibody was raised against a peptide located in the N-Terminal region of PIB5PA (Human). |
| Specificity: | BLAST analysis of the peptide immunogen showed no homology with other human proteins. |
| Purification: | Immunoaffinity Chromatography |

Target Details

| | |
|-------------------|--|
| Target: | INPP5J |
| Alternative Name: | PIB5PA (INPP5J Products) |
| Gene ID: | 27124 |
| UniProt: | Q15735 |

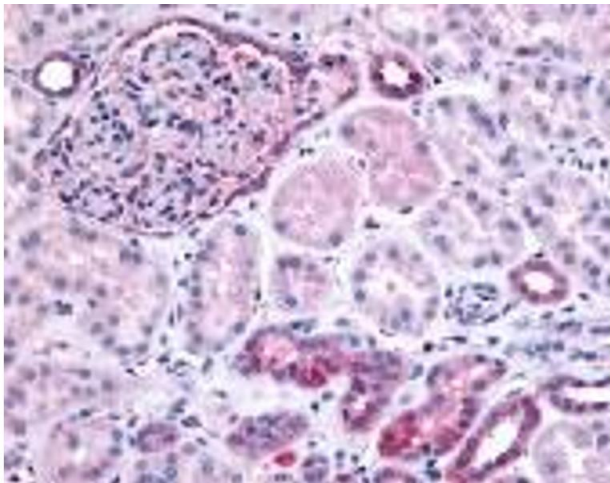
Application Details

| | |
|--------------------|--|
| Application Notes: | PIB5PA antibody can be used in ELISA, Western Blot starting at 1:500 - 1:5000, and immunohistochemistry starting at 0.2 - 0.5 µg/mL. |
| Restrictions: | For Research Use only |

Handling

| | |
|--------------------|--|
| Format: | Liquid |
| Buffer: | PBS, 0.1 % sodium azide. |
| Preservative: | Sodium azide |
| Precaution of Use: | This product contains Sodium azide: a POISONOUS AND HAZARDOUS SUBSTANCE which should be handled by trained staff only. |
| Handling Advice: | As with all antibodies avoid freeze/thaw cycles. |
| Storage: | 4 °C/-80 °C |
| Storage Comment: | PIB5PA antibody should be stored long term (months) at -80 °C and short term (days) at 4 °C. |

Images



Immunohistochemistry

Image 1.