

Datasheet for ABIN2469418
anti-GPRC5C antibody (C-Term)[Go to Product page](#)

1 Image

Overview

Quantity:	0.05 mg
Target:	GPRC5C
Binding Specificity:	C-Term
Reactivity:	Human, Monkey, Dog, Horse, Bat, Cow, Gibbon, Gorilla, Orang-Utan
Host:	Rabbit
Clonality:	Polyclonal
Conjugate:	This GPRC5C antibody is un-conjugated
Application:	ELISA, Immunohistochemistry (IHC)

Product Details

Immunogen:	GPRC5C antibody was raised against a peptide located in the C-Terminal cytoplasmic domain of GPRC5C (Human).
Specificity:	BLAST analysis of the peptide immunogen showed no homology with other human proteins, except GPRC5B (47%).
Purification:	Immunoaffinity Chromatography

Target Details

Target:	GPRC5C
Alternative Name:	GPRC5C (GPRC5C Products)
Background:	GPRC5C is an Orphan-C GPCR induced by retinoids.

Target Details

Gene ID:	55890
UniProt:	Q9NQ84

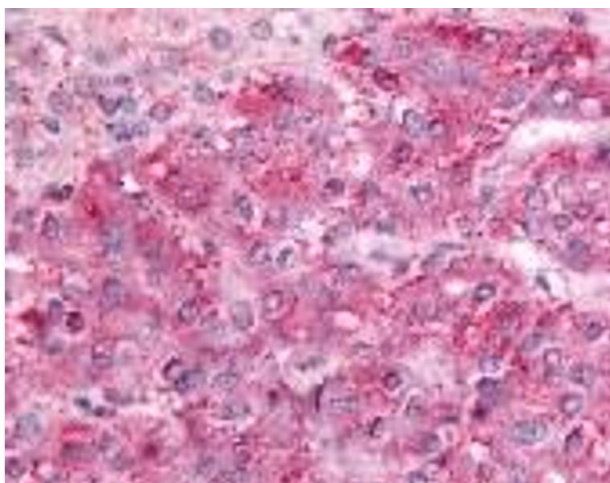
Application Details

Application Notes:	GPRC5C antibody can be used in immunohistochemistry starting at 20 µg/mL.
Restrictions:	For Research Use only

Handling

Format:	Liquid
Buffer:	PBS, 0.1 % sodium azide.
Preservative:	Sodium azide
Precaution of Use:	This product contains Sodium azide: a POISONOUS AND HAZARDOUS SUBSTANCE which should be handled by trained staff only.
Handling Advice:	As with all antibodies avoid freeze/thaw cycles.
Storage:	4 °C/-80 °C
Storage Comment:	GPRC5C antibody should be stored long term (months) at -80 °C and short term (days) at 4 °C.

Images



Immunohistochemistry

Image 1.