

Datasheet for ABIN2469427
anti-EMR2 antibody (N-Term)



[Go to Product page](#)

1 Image

Overview

Quantity:	0.05 mg
Target:	EMR2
Binding Specificity:	N-Term
Reactivity:	Human, Gorilla
Host:	Rabbit
Clonality:	Polyclonal
Conjugate:	This EMR2 antibody is un-conjugated
Application:	ELISA, Immunohistochemistry (IHC)

Product Details

Immunogen:	EMR2 antibody was raised against a peptide located in the N-Terminal extracellular domain of EMR2 (Human).
Specificity:	BLAST analysis of the peptide immunogen showed no homology with other human proteins.
Purification:	Immunoaffinity Chromatography

Target Details

Target:	EMR2
Alternative Name:	EMR2 (EMR2 Products)
Background:	EMR2 is an Orphan-B GPCR with an unknown ligand. EMR2 has five EGF-like domains in the extracellular domain and is highly homologous to CD97. Multiple isoforms of EMR2 are produced by alternative splicing.

Target Details

Gene ID:	30817
UniProt:	Q9UHX3

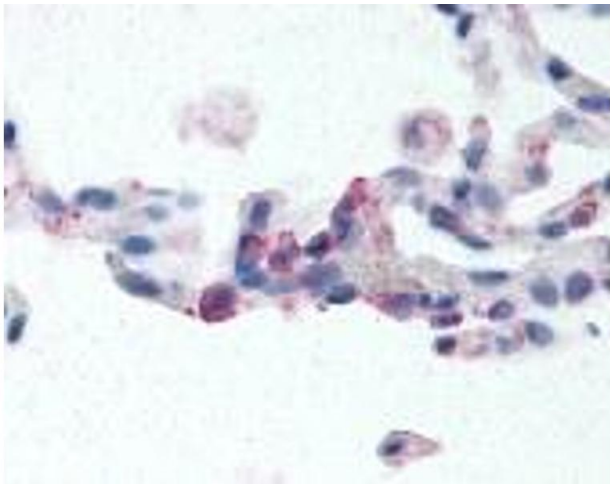
Application Details

Application Notes:	EMR2 antibody can be used in immunohistochemistry starting at 10 - 15 µg/mL.
Restrictions:	For Research Use only

Handling

Format:	Liquid
Buffer:	PBS, 0.1 % sodium azide.
Preservative:	Sodium azide
Precaution of Use:	This product contains Sodium azide: a POISONOUS AND HAZARDOUS SUBSTANCE which should be handled by trained staff only.
Handling Advice:	As with all antibodies avoid freeze/thaw cycles.
Storage:	4 °C/-80 °C
Storage Comment:	EMR2 antibody should be stored long term (months) at -80 °C and short term (days) at 4 °C.

Images



Immunohistochemistry

Image 1.