

Datasheet for ABIN2469428

anti-GPR88 antibody (1st Cytoplasmic Domain)[Go to Product page](#)**1** Image

Overview

Quantity:	0.05 mg
Target:	GPR88
Binding Specificity:	1st Cytoplasmic Domain
Reactivity:	Human, Rat, Mouse, Cow, Rabbit, Monkey, Hamster, Gorilla
Host:	Rabbit
Clonality:	Polyclonal
Conjugate:	This GPR88 antibody is un-conjugated
Application:	ELISA, Immunohistochemistry (IHC)

Product Details

Immunogen:	GPR88 antibody was raised against a peptide located in the 1st cytoplasmic domain of GPR88 (Human).
Specificity:	BLAST analysis of the peptide immunogen showed no homology with other human proteins.
Purification:	Immunoaffinity Chromatography

Target Details

Target:	GPR88
Alternative Name:	GPR88 (GPR88 Products)
Background:	GPR88 is an Orphan-A GPCR with an unknown ligand.
Gene ID:	54112

Target Details

UniProt: Q9GZN0

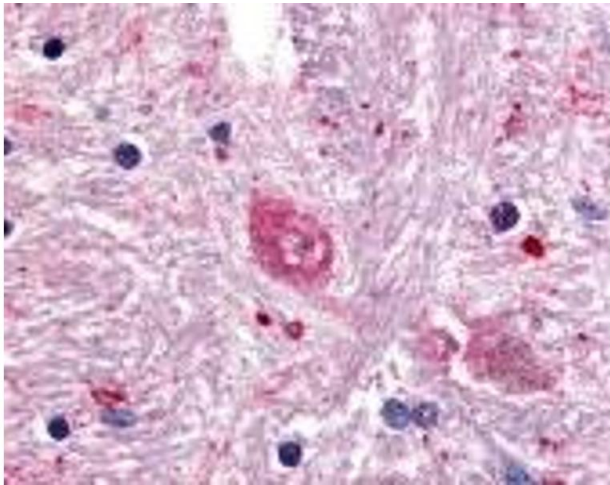
Application Details

Application Notes:	GPR88 antibody can be used in immunohistochemistry starting at 6 µg/mL.
Restrictions:	For Research Use only

Handling

Format:	Liquid
Buffer:	PBS, 0.1 % sodium azide.
Preservative:	Sodium azide
Precaution of Use:	This product contains Sodium azide: a POISONOUS AND HAZARDOUS SUBSTANCE which should be handled by trained staff only.
Handling Advice:	As with all antibodies avoid freeze/thaw cycles.
Storage:	4 °C/-80 °C
Storage Comment:	GPR88 antibody should be stored long term (months) at -80 °C and short term (days) at 4 °C.

Images



Immunohistochemistry

Image 1.