



[Go to Product page](#)

Datasheet for ABIN2469441

anti-GPR61 antibody (2nd Cytoplasmic Domain)

1 Image

Overview

Quantity:	0.05 mg
Target:	GPR61
Binding Specificity:	2nd Cytoplasmic Domain
Reactivity:	Human, Mouse, Monkey, Pig, Rat, Bat, Cow, Horse, Gibbon, Gorilla
Host:	Rabbit
Clonality:	Polyclonal
Conjugate:	This GPR61 antibody is un-conjugated
Application:	ELISA, Immunohistochemistry (IHC)

Product Details

Immunogen:	GPR61 antibody was raised against a peptide located in the 2nd cytoplasmic domain of GPR61 (Human).
Specificity:	BLAST analysis of the peptide immunogen showed no homology with other human proteins.
Purification:	Immunoaffinity Chromatography

Target Details

Target:	GPR61
Alternative Name:	GPR61 (GPR61 Products)
Background:	GPR61 is an Orphan-A GPCR with an unknown ligand.
Gene ID:	83873

Target Details

UniProt: [Q9BZJ8](#)

Application Details

Application Notes: GPR61 antibody can be used in immunohistochemistry starting at 20 µg/mL.

Restrictions: For Research Use only

Handling

Format: Liquid

Buffer: PBS, 0.1 % sodium azide.

Preservative: Sodium azide

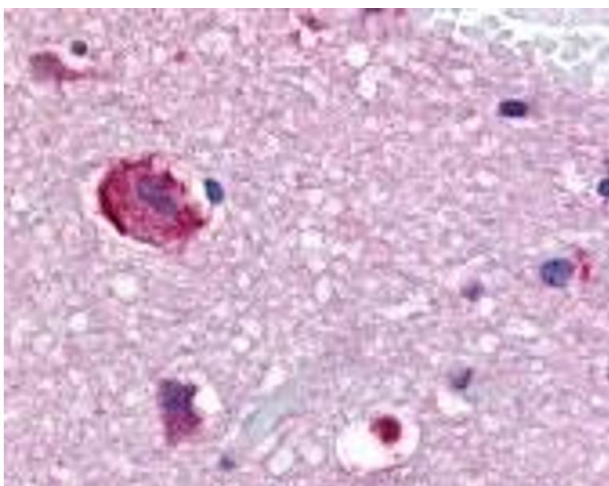
Precaution of Use: This product contains Sodium azide: a POISONOUS AND HAZARDOUS SUBSTANCE which should be handled by trained staff only.

Handling Advice: As with all antibodies avoid freeze/thaw cycles.

Storage: 4 °C/-80 °C

Storage Comment: GPR61 antibody should be stored long term (months) at -80 °C and short term (days) at 4 °C.

Images



Immunohistochemistry

Image 1.