

Datasheet for ABIN2469445

anti-DUSP23 antibody (Internal Region)[Go to Product page](#)**1** Image

Overview

Quantity:	0.05 mg
Target:	DUSP23
Binding Specificity:	Internal Region
Reactivity:	Human, Bat, Cow, Horse, Monkey, Rat, Gorilla
Host:	Rabbit
Clonality:	Polyclonal
Conjugate:	This DUSP23 antibody is un-conjugated
Application:	Immunohistochemistry (IHC), ELISA

Product Details

Immunogen:	DUSP23 antibody was raised against a peptide located near the internal domain of DUSP23 (Human).
Specificity:	BLAST analysis of the peptide immunogen showed no homology with other human proteins.
Purification:	Immunoaffinity Chromatography

Target Details

Target:	DUSP23
Alternative Name:	DUSP23 (DUSP23 Products)
Background:	Most of dual-specificity protein phosphatases (DSPs) play an important role in the regulation of mitogenic signal transduction and controlling the cell cycle in response to extracellular stimuli. DUSP23 has been shown to dephosphorylate p44ERK1 but not p38 and p54SAPKbeta in vitro.

Target Details

	Reverse transcription-PCR (RT-PCR) revealed that the DUSP23 was expressed in most fetal tissues and two adult tissues: testis and colon.
Gene ID:	54935
UniProt:	Q9BVJ7

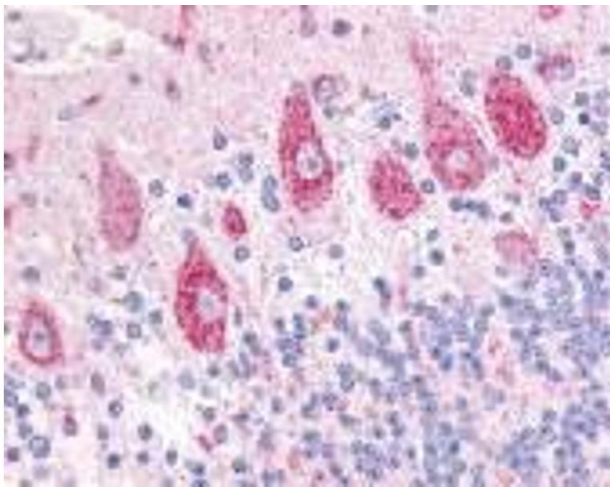
Application Details

Application Notes:	DUSP23 antibody can be used in ELISA, and immunohistochemistry starting at 34 µg/mL.
Restrictions:	For Research Use only

Handling

Format:	Liquid
Buffer:	PBS, 0.1 % sodium azide.
Preservative:	Sodium azide
Precaution of Use:	This product contains Sodium azide: a POISONOUS AND HAZARDOUS SUBSTANCE which should be handled by trained staff only.
Handling Advice:	As with all antibodies avoid freeze/thaw cycles.
Storage:	4 °C/-80 °C
Storage Comment:	DUSP23 antibody should be stored long term (months) at -80 °C and short term (days) at 4 °C.

Images



Immunohistochemistry

Image 1.