

Datasheet for ABIN2469456

anti-PDE8B antibody (Internal Region)[Go to Product page](#)**1** Image

Overview

Quantity:	0.05 mg
Target:	PDE8B
Binding Specificity:	Internal Region
Reactivity:	Human, Monkey, Gibbon, Gorilla
Host:	Rabbit
Clonality:	Polyclonal
Conjugate:	This PDE8B antibody is un-conjugated
Application:	Immunohistochemistry (IHC)

Product Details

Immunogen:	PDE8B antibody was raised against a peptide located near the internal domain of PDE8B (Human).
Specificity:	BLAST analysis of the peptide immunogen showed no homology with other human proteins.
Purification:	Immunoaffinity Chromatography

Target Details

Target:	PDE8B
Alternative Name:	PDE8B (PDE8B Products)
Background:	Phosphodiesterase 8B, is a high affinity, cAMP-specific phosphodiesterase. Enhanced PDE8B activity has been associated with the phenotypic expression of Gsalpha mutations in human pituitary tumors. PDE8B is absent in normal pituitary but present in GH-secreting adenomas.

Target Details

PDE8B activity is inhibited by dipyridamole, but it is insensitive to rolipram, zaprinast, or IBMX.

Gene ID: 8622

UniProt: [O95263](#)

Pathways: [Negative Regulation of Hormone Secretion, cAMP Metabolic Process](#)

Application Details

Application Notes: PDE8B antibody can be used in ELISA, Western Blot starting at 1:500 - 1:1000, immunohistochemistry starting at 5 µg/mL, and immunofluorescence starting at 10 µg/mL.

Restrictions: For Research Use only

Handling

Format: Liquid

Buffer: PBS, 0.1 % sodium azide.

Preservative: Sodium azide

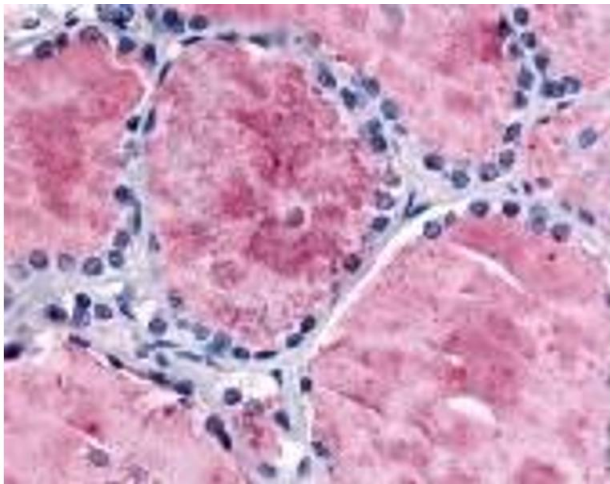
Precaution of Use: This product contains Sodium azide: a POISONOUS AND HAZARDOUS SUBSTANCE which should be handled by trained staff only.

Handling Advice: As with all antibodies avoid freeze/thaw cycles.

Storage: 4 °C/-80 °C

Storage Comment: PDE8B antibody should be stored long term (months) at -80 °C and short term (days) at 4 °C.

Images



Immunohistochemistry

Image 1.