



[Go to Product page](#)

Datasheet for ABIN2469463

anti-PDE6A antibody (N-Term)

1 Image

Overview

Quantity:	0.05 mg
Target:	PDE6A
Binding Specificity:	N-Term
Reactivity:	Human, Mouse, Rat, Hamster, Monkey, Gibbon, Gorilla
Host:	Rabbit
Clonality:	Polyclonal
Conjugate:	This PDE6A antibody is un-conjugated
Application:	Immunohistochemistry (IHC)

Product Details

Immunogen:	PDE6A antibody was raised against a peptide located in the N-Terminal region of PDE6A (Human).
Specificity:	BLAST analysis of the peptide immunogen showed no homology with other human proteins.
Purification:	Immunoaffinity Chromatography

Target Details

Target:	PDE6A
Alternative Name:	PDE6A (PDE6A Products)
Background:	Phosphodiesterase 6A, a catalytic subunit of the photoreceptor phosphodiesterase, has been shown to affect functioning of eye retina as the alpha subunit of the heterotetrameric rod photoreceptor. Mutations in PDE6A have been identified as a cause of autosomal recessive

Target Details

retinitis pigmentosa.

Gene ID: 5145

UniProt: [P16499](#)

Pathways: [Regulation of G-Protein Coupled Receptor Protein Signaling](#), [Phototransduction](#)

Application Details

Application Notes: PDE6A antibody can be used in ELISA, Western Blot starting at 1 - 2 µg/mL, immunohistochemistry starting at 10 µg/mL, immunocytochemistry, and immunoprecipitation starting at 1 - 2 µg/mL.

Restrictions: For Research Use only

Handling

Format: Liquid

Buffer: PBS, 0.1 % sodium azide.

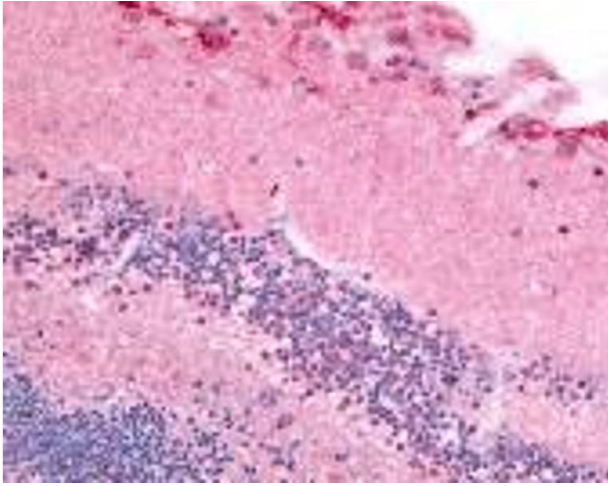
Preservative: Sodium azide

Precaution of Use: This product contains Sodium azide: a POISONOUS AND HAZARDOUS SUBSTANCE which should be handled by trained staff only.

Handling Advice: As with all antibodies avoid freeze/thaw cycles.

Storage: 4 °C/-80 °C

Storage Comment: PDE6A antibody should be stored long term (months) at -80 °C and short term (days) at 4 °C.



Immunohistochemistry

Image 1.