

Datasheet for ABIN2469512  
**anti-WNT10A antibody (Internal Region)**[Go to Product page](#)

## 1 Image

## Overview

Quantity:	0.05 mg
Target:	WNT10A
Binding Specificity:	Internal Region
Reactivity:	Human, Cow, Dog, Rabbit, Monkey, Bat, Gibbon, Gorilla
Host:	Rabbit
Clonality:	Polyclonal
Conjugate:	This WNT10A antibody is un-conjugated
Application:	Immunohistochemistry (IHC)

## Product Details

Immunogen:	WNT10A antibody was raised against a peptide located near the internal domain of WNT10A (Human).
Specificity:	BLAST analysis of the peptide immunogen showed no homology with other human proteins, except PTPRD (44%).
Purification:	Immunoaffinity Chromatography

## Target Details

Target:	WNT10A
Alternative Name:	WNT10A ( <a href="#">WNT10A Products</a> )
Background:	Wnts are important signaling molecules involved in normal developmental processes as well as some forms of cancer. WNT10A expression has been documented in many cancers, include

## Target Details

those of the stomach, colon, breast, bone marrow, esophagus, and blood.

Gene ID: 80326

UniProt: [Q9GZT5](#)

Pathways: [WNT Signaling](#)

## Application Details

Application Notes: WNT10A antibody can be used in ELISA starting at 1:10000, Western Blot starting at 1:500 - 1:2000, immunohistochemistry starting at 1:200 - 1:400, and flow cytometry starting at 1:200 - 1:400.

Restrictions: For Research Use only

## Handling

Format: Liquid

Buffer: PBS, 0.1 % sodium azide.

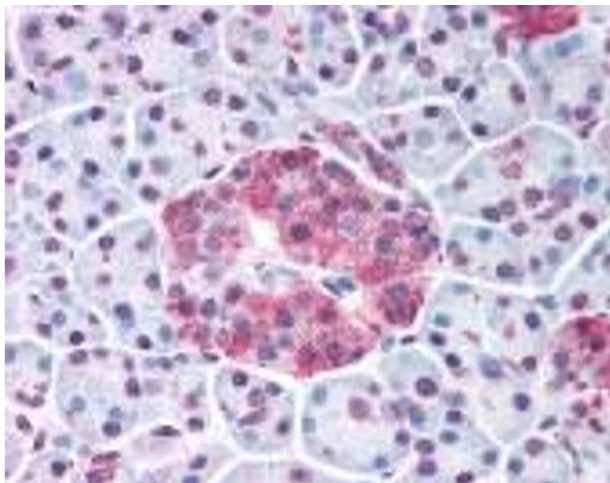
Preservative: Sodium azide

Precaution of Use: This product contains Sodium azide: a POISONOUS AND HAZARDOUS SUBSTANCE which should be handled by trained staff only.

Handling Advice: As with all antibodies avoid freeze/thaw cycles.

Storage: 4 °C/-80 °C

Storage Comment: WNT10A antibody should be stored long term (months) at -80 °C and short term (days) at 4 °C.



#### Immunohistochemistry

**Image 1.**