

Datasheet for ABIN2469549

**anti-PLA2G3 antibody (Internal Region)**[Go to Product page](#)**1** Image

## Overview

Quantity:	0.05 mg
Target:	PLA2G3
Binding Specificity:	Internal Region
Reactivity:	Human, Cow, Monkey, Pig, Gibbon, Gorilla
Host:	Rabbit
Clonality:	Polyclonal
Conjugate:	This PLA2G3 antibody is un-conjugated
Application:	Immunohistochemistry (IHC)

## Product Details

Immunogen:	PLA2G3 antibody was raised against a peptide located near the internal domain of PLA2G3 (Human).
Specificity:	BLAST analysis of the peptide immunogen showed no homology with other human proteins.
Purification:	Immunoaffinity Chromatography

## Target Details

Target:	PLA2G3
Alternative Name:	PLA2G3 ( <a href="#">PLA2G3 Products</a> )
Background:	Human group III secreted phospholipase A2 belongs to a superfamily of intracellular and secreted enzymes that catalyze the hydrolysis of glycerophospholipids at the sn-2 position to release fatty acids and lysophospholipids. Group III PLA2 enzymes were originally identified in

## Target Details

invertebrates such as bees and scorpions. Human group III sPLA2 has been shown to be a calcium dependent enzyme. It consists of a central group III sPLA2 domain flanked by unique N- and C-terminal domains that are proteolytically removed in most tissues. The sPLA2 domain is sufficient for catalytic activity. sPLA2-III is preferentially expressed in the microvascular endothelium of tissues with inflammation, ischemic injury and cancer.

Gene ID: 50487

UniProt: [Q9NZ20](#)

## Application Details

Application Notes: PLA2G3 antibody can be used in ELISA, and immunohistochemistry starting at 10 µg/mL.

Restrictions: For Research Use only

## Handling

Format: Liquid

Buffer: PBS, 0.1 % sodium azide.

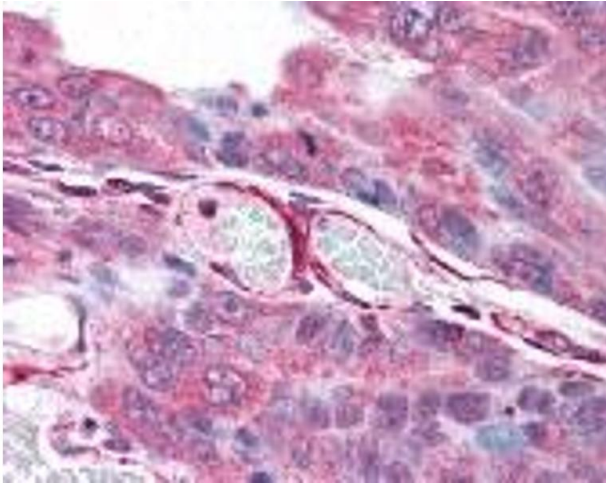
Preservative: Sodium azide

Precaution of Use: This product contains Sodium azide: a POISONOUS AND HAZARDOUS SUBSTANCE which should be handled by trained staff only.

Handling Advice: As with all antibodies avoid freeze/thaw cycles.

Storage: 4 °C/-80 °C

Storage Comment: PLA2G3 antibody should be stored long term (months) at -80 °C and short term (days) at 4 °C.



#### Immunohistochemistry

Image 1.