

Datasheet for ABIN2469662  
**anti-RIF1 antibody (AA 2406-2419)**[Go to Product page](#)

## 2 Images

## Overview

|                      |   |
|----------------------|---|
| Quantity:            | 0.05 mg   |
| Target:              | RIF1  |
| Binding Specificity: | AA 2406-2419  |
| Reactivity:          | Human, Mouse  |
| Host:                | Rabbit  |
| Clonality:           | Polyclonal  |
| Conjugate:           | This RIF1 antibody is un-conjugated   |
| Application:         | Western Blotting (WB), ELISA, Immunohistochemistry (IHC), Immunofluorescence (IF) |

## Product Details

|               |   |
|---------------|---|
| Immunogen:    | RIF1 antibody was raised against amino acids 2406 - 2419 of RIF1 (Mouse). |
| Purification: | Immunoaffinity Chromatography   |

## Target Details

|                   |   |
|-------------------|---|
| Target:           | RIF1  |
| Alternative Name: | RIF1 ( <a href="#">RIF1 Products</a> )  |
| Background:       | Rif1 (also known as telomere-associated protein RIF1 and Rap1-interacting factor 1) is a mouse ortholog of the yeast Rif1 family of telomere-associated proteins identified on the basis of its high expression in primordial germ cells and embryo-derived pluripotent stem cell lines. Mouse Rif1 is a protein involved in negative regulation of telomere length. It is also localized to ATM dependent DNA damage foci and may act at the chromatin level to allow access to some |

## Target Details

|           |                                       |
|-----------|---------------------------------------|
|           | factors.                              |
| Gene ID:  | 55183                                 |
| UniProt:  | <a href="#">Q5UIP0</a>                |
| Pathways: | <a href="#">Stem Cell Maintenance</a> |

## Application Details

|                    |  |
|--------------------|--|
| Application Notes: | RIImmunofluorescence1 antibody can be used in Western Blot starting at 1:500 - 1:1000, and immunohistochemistry starting at 5 µg/mL. |
| Restrictions:      | For Research Use only  |

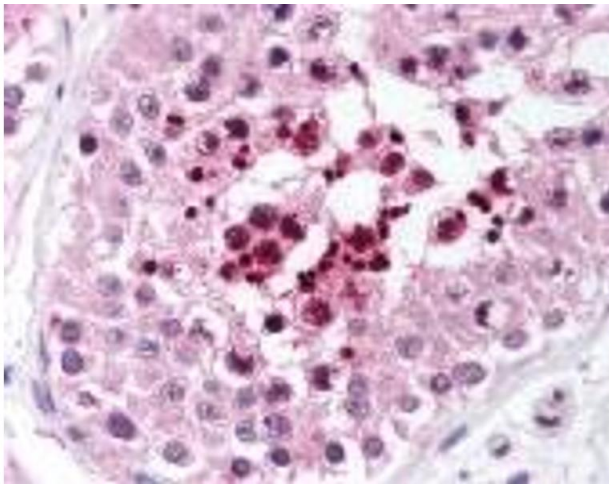
## Handling

|                    |  |
|--------------------|--|
| Format:            | Liquid   |
| Buffer:            | 0.02 M potassium phosphate, 0.15 M sodium chloride, pH 7.2, 0.01 % sodium azide.   |
| Preservative:      | Sodium azide   |
| Precaution of Use: | This product contains Sodium azide: a POISONOUS AND HAZARDOUS SUBSTANCE which should be handled by trained staff only.                                   |
| Handling Advice:   | As with all antibodies avoid freeze/thaw cycles.   |
| Storage:           | -20 °C   |
| Storage Comment:   | Store RIF1 antibody at -20 °C prior to opening. Dilute only prior to immediate use. For extended storage aliquot contents and freeze at -20 °C or below. |



#### Immunohistochemistry

Image 1.



#### Immunohistochemistry

Image 2.