

Datasheet for ABIN2470260
anti-CUL9 antibody (AA 2503-2517)[Go to Product page](#)

1 Image

Overview

Quantity:	0.05 mL
Target:	CUL9
Binding Specificity:	AA 2503-2517
Reactivity:	Human
Host:	Rabbit
Clonality:	Polyclonal
Conjugate:	This CUL9 antibody is un-conjugated
Application:	Western Blotting (WB), Immunoprecipitation (IP), Immunohistochemistry (IHC), ELISA

Product Details

Immunogen:	Cullin 9 antibody was raised against amino acids 2503 - 2517 of Cullin 9 (Human).
Purification:	Delipidation and Defibrination

Target Details

Target:	CUL9
Alternative Name:	Cullin 9 (CUL9 Products)
Background:	Cullins assemble a potentially large number of ubiquitin ligases by binding to the RING protein ROC1 to catalyse polyubiquitination, as well as binding to various specificity factors to recruit substrates. PARC is a cullin family member that functions as a cytoplasmic anchor protein in p53-associated protein complexes. PARC regulates the subcellular localization of p53 and subsequent function. PARC forms a complex with p53 in the cytoplasm of unstressed cells and

Target Details

interacts with UBCH7 and UBCH8. PARC shows a cytoplasmic localization and is ubiquitously expressed in all tissues with highest expression in testis brain and kidney.

Gene ID: 23113

UniProt: [Q8IWT3](#)

Application Details

Application Notes: Cullin 9 antibody can be used in ELISA starting at 1:000 - 1:1000, and immunohistochemistry starting at 10 µg/mL.

Restrictions: For Research Use only

Handling

Format: Liquid

Buffer: Sterile filtered antiserum, 0.01 % sodium azide.

Preservative: Sodium azide

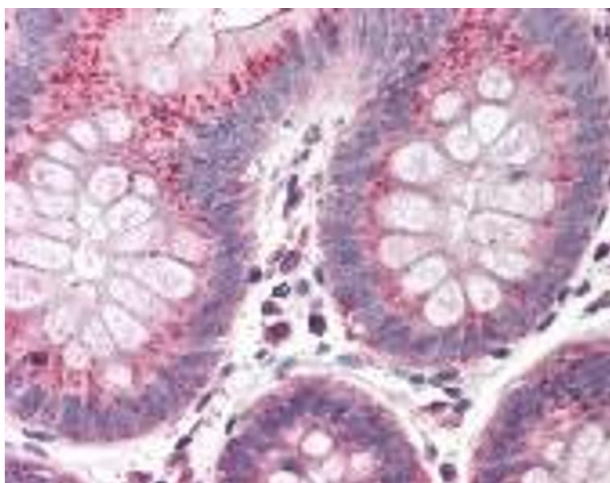
Precaution of Use: This product contains Sodium azide: a POISONOUS AND HAZARDOUS SUBSTANCE which should be handled by trained staff only.

Handling Advice: As with all antibodies avoid freeze/thaw cycles.

Storage: 4 °C/-20 °C

Storage Comment: Store Cullin 9 antibody at 4 °C or -20 °C.

Images



Immunohistochemistry

Image 1.