



[Go to Product page](#)

Datasheet for ABIN2470329
anti-COL6A1 antibody

2 Images

Overview

Quantity:	0.05 mg
Target:	COL6A1
Reactivity:	Human, Cow
Host:	Rabbit
Clonality:	Polyclonal
Conjugate:	This COL6A1 antibody is un-conjugated
Application:	Western Blotting (WB), Immunohistochemistry (IHC), ELISA, Immunoprecipitation (IP), Immunofluorescence (IF)

Product Details

Immunogen:	COL6A1 antibody was raised against Collagen Type VI from human and bovine placenta (Human).
Purification:	Immunoaffinity Chromatography

Target Details

Target:	COL6A1
Alternative Name:	COL6A1 (COL6A1 Products)
Background:	Collagens are highly conserved throughout evolution and are characterized by an uninterrupted "Glycine-X-Y" triplet repeat that is a necessary part of the triple helical structure. For these reasons it is often extremely difficult to generate antibodies with specificities to collagens. The development of type specific antibodies is dependent on NON-DENATURED three-dimensional

Target Details

epitopes. Collagens are extensively purified for immunization from human and bovine placenta and cartilage by limited pepsin digestion and selective salt precipitation. This preparation results in a native conformation of the protein. Antibodies are isolated from rabbit antiserum and are extensively cross-adsorbed by immunoaffinity purification to produce 'type' specific antibodies. Greatly diminished reactivity and selectivity of these antibodies will result if denaturing and reducing conditions of SDS-PAGE and immunoblotting are used.

Gene ID: 1291

UniProt: [P12109](#)

Pathways: [Growth Factor Binding](#), [SARS-CoV-2 Protein Interactome](#)

Application Details

Application Notes: COL6A1 antibody can be used in immunohistochemistry starting at 1.25 - 2.5 µg/mL.

Restrictions: For Research Use only

Handling

Format: Liquid

Buffer: 0.125 M sodium borate, 0.075 M sodium chloride, 0.005 M EDTA, pH 8.0, 0.01 % sodium azide.

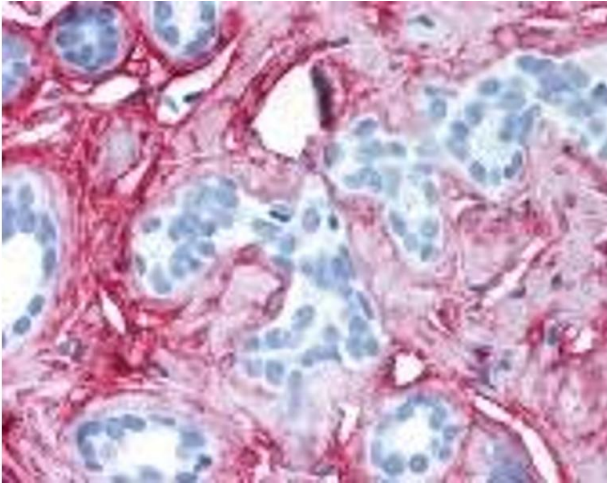
Preservative: Sodium azide

Precaution of Use: This product contains Sodium azide: a POISONOUS AND HAZARDOUS SUBSTANCE which should be handled by trained staff only.

Handling Advice: As with all antibodies avoid freeze/thaw cycles.

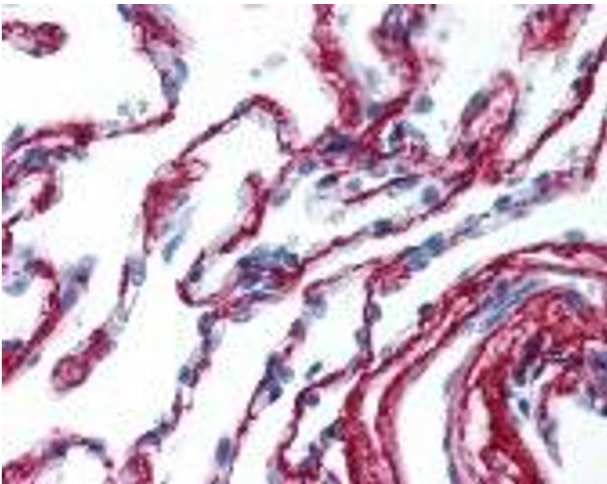
Storage: 4 °C/-20 °C

Storage Comment: Store COL6A1 antibody at 4 °C or -20 °C.



Immunohistochemistry

Image 1.



Immunohistochemistry

Image 2.