

Datasheet for ABIN2470367

anti-SPRY4 antibody (AA 306-322)[Go to Product page](#)**1** Image

Overview

| | |
|----------------------|--|
| Quantity: | 0.05 mg |
| Target: | SPRY4 |
| Binding Specificity: | AA 306-322 |
| Reactivity: | Human, Chimpanzee |
| Host: | Rabbit |
| Clonality: | Polyclonal |
| Conjugate: | This SPRY4 antibody is un-conjugated |
| Application: | Western Blotting (WB), ELISA, Immunohistochemistry (IHC) |

Product Details

| | |
|---------------|---|
| Immunogen: | SPRY4 antibody was raised against amino acids 306-322 of SPRY4 (Human). |
| Purification: | Immunoaffinity Chromatography |

Target Details

| | |
|-------------------|---|
| Target: | SPRY4 |
| Alternative Name: | SPRY4 (SPRY4 Products) |
| Background: | Sprouty-4 (also known as SPRY4) is an inhibitor of the insulin receptor and EGFR-transduced mitogen-activated protein kinase (MAPK) signaling pathway downstream of FGF and EGF receptor tyrosine kinase activation. It is positioned upstream of RAS activation and impairs the formation of active GTP-RAS. SPRY4 is widely expressed, with different isoforms. The protein consists of 322 amino acids, with a cysteine-rich region, Src homology 3 binding regions, |

Target Details

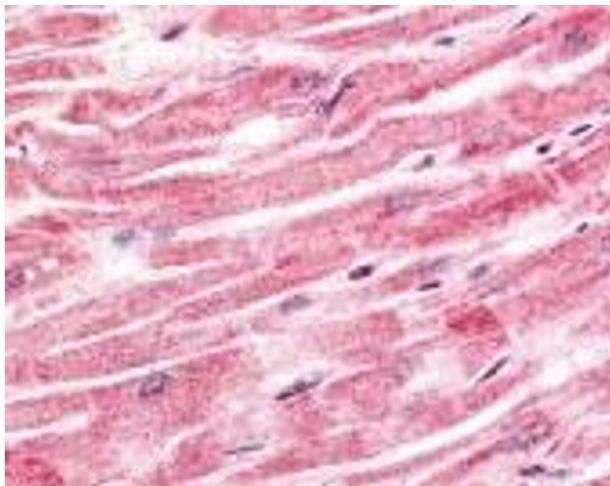
| | |
|----------|---|
| | proline-rich regions, and a PEST sequence. It is expressed predominantly in the cytoplasm. Northern results show bands across most tissues, with strongest expression in heart, brain, placenta, lung, and intestine. |
| Gene ID: | 81848 |
| UniProt: | Q9C004 |

Application Details

| | |
|--------------------|--|
| Application Notes: | SPRY4 antibody can be used in Western Blot, immunohistochemistry starting at 1:200, and immunoprecipitation. |
| Restrictions: | For Research Use only |

Handling

| | |
|--------------------|--|
| Format: | Liquid |
| Buffer: | 0.02 M potassium phosphate, 0.15 M sodium chloride, pH 7.2, 0.01 % sodium azide. |
| Preservative: | Sodium azide |
| Precaution of Use: | This product contains Sodium azide: a POISONOUS AND HAZARDOUS SUBSTANCE which should be handled by trained staff only. |
| Handling Advice: | As with all antibodies avoid freeze/thaw cycles. |
| Storage: | 4 °C/-20 °C |
| Storage Comment: | Store SPRY4 antibody at 4 °C or -20 °C. |



Immunohistochemistry

Image 1.