

Datasheet for ABIN2470503
anti-TLR8 antibody (AA 750-850)



[Go to Product page](#)

2 Images

Overview

Quantity:	0.05 mg
Target:	TLR8
Binding Specificity:	AA 750-850
Reactivity:	Human, Mouse
Host:	Mouse
Clonality:	Monoclonal
Conjugate:	This TLR8 antibody is un-conjugated
Application:	Western Blotting (WB), Immunohistochemistry (IHC), Flow Cytometry (FACS)

Product Details

Immunogen:	TLR8 monoclonal antibody was raised against amino acids 750 - 850 of TLR8 (Human).
Clone:	44C143
Isotype:	IgG kappa
Purification:	Protein G Column

Target Details

Target:	TLR8
Alternative Name:	TLR8 (TLR8 Products)
Background:	Ten human homologs of TLRs (TLR1-10) have been described. TLR8 gene contains three exons, two of which have coding function. TLR8 cDNA codes for a protein of approximate

Target Details

molecular weight of 120 kDa (4,5). Toll-like receptors (TLRs) are signaling molecules that recognize different microbial products during infection and serve as an important link between the innate and adaptive immune responses. These proteins act through adaptor molecules such as MyD88 and TIRAP to activate various kinases and transcription factors. Like TLR7, TLR8 is localized to endosomal or lysosomal compartments and stimulates the innate immune response after activation by guanosine- and uridine-rich single-stranded RNA. Human but not murine TLR8 confers responsiveness to the antiviral compound R-848. The protein encoded by this gene is a member of the Toll-like receptor (TLR) family which plays a fundamental role in pathogen recognition and activation of innate immunity. TLRs are highly conserved from *Drosophila* to humans and share structural and functional similarities. They recognize pathogen-associated molecular patterns (PAMPs) that are expressed on infectious agents, and mediate the production of cytokines necessary for the development of effective immunity. The various TLRs exhibit different patterns of expression. This gene is predominantly expressed in lung and peripheral blood leukocytes, and lies in close proximity to another family member, TLR7, on chromosome X.

Gene ID: 51311

UniProt: [Q9NR97](#)

Pathways: [TLR Signaling](#), [Activation of Innate immune Response](#), [Toll-Like Receptors Cascades](#)

Application Details

Application Notes: TLR8 antibody can be used in immunohistochemistry starting at 1:100, and flow cytometry.

Restrictions: For Research Use only

Handling

Format: Liquid

Buffer: 0.2 mL PBS, 0.05 % BSA, 0.05 % sodium azide.

Preservative: Sodium azide

Precaution of Use: This product contains Sodium azide: a POISONOUS AND HAZARDOUS SUBSTANCE which should be handled by trained staff only.

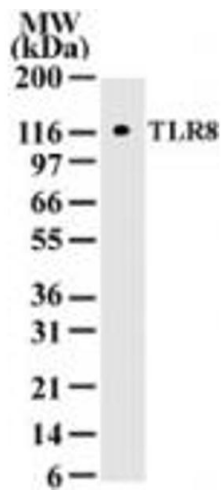
Handling Advice: As with all antibodies avoid freeze/thaw cycles.

Storage: 4 °C/-20 °C

Handling

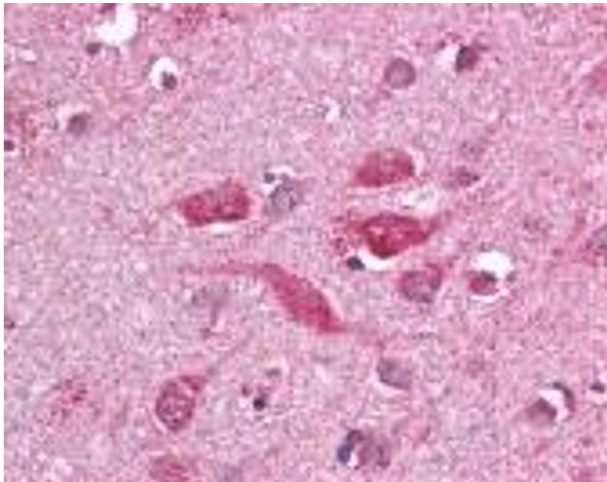
Storage Comment: Store TLR8 antibody at 4 °C or -20 °C.

Images



Western Blotting

Image 1.



Immunohistochemistry

Image 2.