

Datasheet for ABIN2472591

anti-CD80 antibody[Go to Product page](#)**1** Image**3** Publications

Overview

Quantity:	0.1 mg
Target:	CD80
Reactivity:	Human
Host:	Mouse
Clonality:	Monoclonal
Conjugate:	This CD80 antibody is un-conjugated
Application:	Flow Cytometry (FACS), Western Blotting (WB), Immunoprecipitation (IP)

Product Details

Clone:	MEM-233
Isotype:	IgG1
Characteristics:	Purified IgG
Purification:	Purified

Target Details

Target:	CD80
Alternative Name:	CD80 (CD80 Products)
Background:	Synonyms: B7-1
Gene ID:	941
UniProt:	P33681

Target Details

Pathways: [TCR Signaling](#), [Fc-epsilon Receptor Signaling Pathway](#), [EGFR Signaling Pathway](#), [Neurotrophin Signaling Pathway](#), [Positive Regulation of Immune Effector Process](#), [Cancer Immune Checkpoints](#)

Application Details

Application Notes: Optimal working dilution should be determined by the investigator.

Restrictions: For Research Use only

Handling

Format: Liquid

Concentration: 1.0 mg/mL

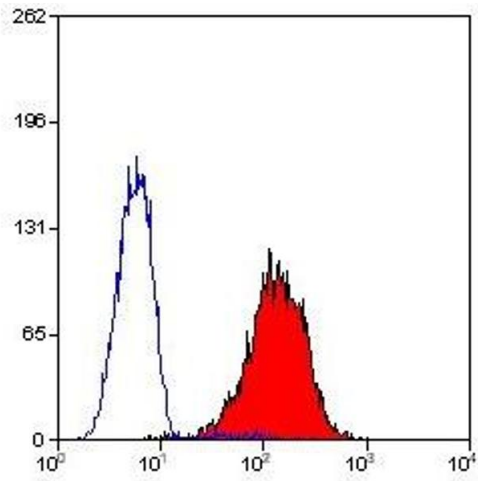
Preservative: Without preservative

Publications

Product cited in: Daubenberger, Spirig, Patarroyo, Pluschke: "Flow cytometric analysis on cross-reactivity of human-specific CD monoclonal antibodies with splenocytes of *Aotus nancymaae*, a non-human primate model for biomedical research." in: **Veterinary immunology and immunopathology**, Vol. 119, Issue 1-2, pp. 14-20, (2007) ([PubMed](#)).

Angel, George, Brooks, Ostrovsky, Brown, Dunbar: "Cutting edge: CD1a+ antigen-presenting cells in human dermis respond rapidly to CCR7 ligands." in: **Journal of immunology (Baltimore, Md. : 1950)**, Vol. 176, Issue 10, pp. 5730-4, (2006) ([PubMed](#)).

Zhan, Towler, Calder: "The immunomodulatory role of human conjunctival epithelial cells." in: **Investigative ophthalmology & visual science**, Vol. 44, Issue 9, pp. 3906-10, (2003) ([PubMed](#)).



Flow Cytometry

Image 1.