

Datasheet for ABIN2473005

**anti-C-Type Lectin Domain Family 1, Member B (CLEC1B)
antibody (PE)**[Go to Product page](#)**1** Image**2** Publications

Overview

Quantity:	100 tests
Target:	C-Type Lectin Domain Family 1, Member B (CLEC1B)
Reactivity:	Mouse
Host:	Rat
Clonality:	Monoclonal
Conjugate:	PE
Application:	Flow Cytometry (FACS)

Product Details

Immunogen:	RBL-2H3 cells stably expressing HA-tagged mouse CLEC2.
Clone:	17D9
Isotype:	IgG2b
Characteristics:	Purified IgG conjugated to R. Phycoerythrin (RPE)

Target Details

Target:	C-Type Lectin Domain Family 1, Member B (CLEC1B)
Alternative Name:	CLEC2 (CLEC1B Products)
Target Type:	Viral Protein
Background:	Synonyms: CLEC1B
Gene ID:	56760

Target Details

UniProt: [Q9JL99](#)

Application Details

Application Notes: Optimal working dilution should be determined by the investigator.

Restrictions: For Research Use only

Handling

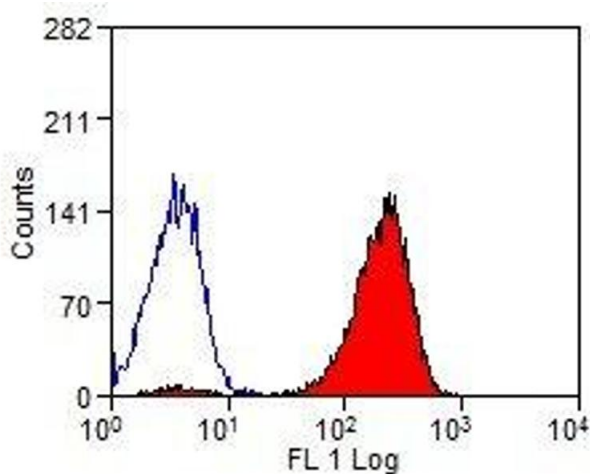
Format: Lyophilized

Publications

Product cited in: Mourão-Sá, Robinson, Zelenay, Sancho, Chakravarty, Larsen, Plantinga, Van Rooijen, Soares, Lambrecht, Reis e Sousa: "CLEC-2 signaling via Syk in myeloid cells can regulate inflammatory responses." in: **European journal of immunology**, Vol. 41, Issue 10, pp. 3040-53, (2011) ([PubMed](#)).

Kerrigan, Dennehy, Mourão-Sá, Faro-Trindade, Willment, Taylor, Eble, Reis e Sousa, Brown: "CLEC-2 is a phagocytic activation receptor expressed on murine peripheral blood neutrophils." in: **Journal of immunology (Baltimore, Md. : 1950)**, Vol. 182, Issue 7, pp. 4150-7, (2009) ([PubMed](#)).

Images



Flow Cytometry

Image 1.