

Datasheet for ABIN2473318
anti-DLL4 antibody (PE)



[Go to Product page](#)

1 Image **3** Publications

Overview

Quantity:	100 tests
Target:	DLL4
Reactivity:	Mouse
Host:	Hamster
Clonality:	Monoclonal
Conjugate:	This DLL4 antibody is conjugated to PE
Application:	Flow Cytometry (FACS)

Product Details

Immunogen:	Recombinant mouse DLL4
Clone:	HMD4-2
Isotype:	IgG
Characteristics:	Purified IgG conjugated to R. Phycoerythrin (RPE)

Target Details

Target:	DLL4
Alternative Name:	delta-LIKE PROTEIN 4 (DLL4 Products)
Background:	Synonyms: DLL4
Gene ID:	54485
UniProt:	Q9JI71

Target Details

Pathways: [Notch Signaling](#)

Application Details

Application Notes: Optimal working dilution should be determined by the investigator.

Restrictions: For Research Use only

Handling

Format: Lyophilized

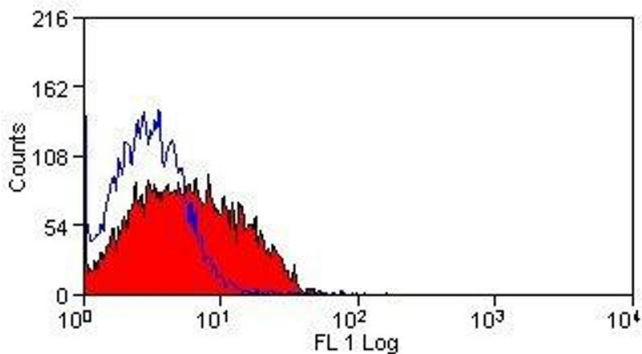
Publications

Product cited in: Sekine, Moriyama, Koyanagi, Koyama, Ogata, Okumura, Yagita: "Differential regulation of splenic CD8- dendritic cells and marginal zone B cells by Notch ligands." in: **International immunology**, Vol. 21, Issue 3, pp. 295-301, (2009) ([PubMed](#)).

Yamanda, Ebihara, Asada, Okazaki, Niu, Ebihara, Koyanagi, Yamaguchi, Yagita, Arai: "Role of ephrinB2 in nonproductive angiogenesis induced by Delta-like 4 blockade." in: **Blood**, Vol. 113, Issue 15, pp. 3631-9, (2009) ([PubMed](#)).

Moriyama, Sekine, Koyanagi, Koyama, Ogata, Chiba, Hirose, Okumura, Yagita: "Delta-like 1 is essential for the maintenance of marginal zone B cells in normal mice but not in autoimmune mice." in: **International immunology**, Vol. 20, Issue 6, pp. 763-73, (2008) ([PubMed](#)).

Images



Flow Cytometry

Image 1.