



[Go to Product page](#)

Datasheet for ABIN2473413

anti-EGR1 antibody (AA 94-108)

1 Image

1 Publication

Overview

Quantity:	50 µg
Target:	EGR1
Binding Specificity:	AA 94-108
Reactivity:	Human, Cow, Dog, Sheep, Chimpanzee, Rhesus Monkey
Host:	Rabbit
Clonality:	Polyclonal
Conjugate:	This EGR1 antibody is un-conjugated
Application:	Western Blotting (WB), ELISA, Immunohistochemistry (Paraffin-embedded Sections) (IHC (p))

Product Details

Immunogen:	A synthetic peptide sequence corresponding to amino acid 94-108 of human EGR1.
Isotype:	IgG
Cross-Reactivity:	Chimpanzee, Cow (Bovine), Dog (Canine), Rhesus Monkey, Sheep (Ovine)
Characteristics:	Purified IgG
Purification:	Purified

Target Details

Target:	EGR1
Alternative Name:	EGR1 (EGR1 Products)
Gene ID:	1958

Target Details

UniProt: [P18146](#)

Pathways: [Regulation of Carbohydrate Metabolic Process](#), [Regulation of long-term Neuronal Synaptic Plasticity](#)

Application Details

Application Notes: Optimal working dilution should be determined by the investigator.

Restrictions: For Research Use only

Handling

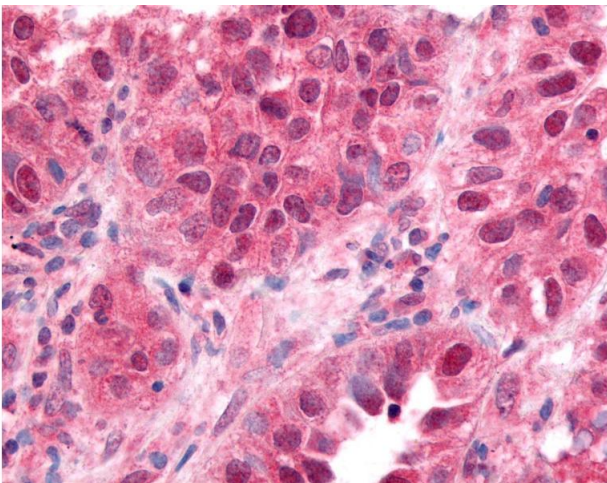
Format: Liquid

Concentration: 0.5 mg/mL

Publications

Product cited in: Rogalska, Gajek, Marczak: "Epothilone B induces extrinsic pathway of apoptosis in human SKOV-3 ovarian cancer cells." in: **Toxicology in vitro : an international journal published in association with BIBRA**, Vol. 28, Issue 4, pp. 675-83, (2014) ([PubMed](#)).

Images



Immunohistochemistry

Image 1.