



[Go to Product page](#)

Datasheet for ABIN2473805

anti-Glucagon antibody (AA 8-18)

1 Image

1 Publication

Overview

Quantity:	1 mL
Target:	Glucagon (GCG)
Binding Specificity:	AA 8-18
Reactivity:	Human
Host:	Goat
Clonality:	Polyclonal
Conjugate:	This Glucagon antibody is un-conjugated
Application:	ELISA

Product Details

Immunogen:	Synthetic peptide corresponding to amino acids 8-18 of human glucagon
Isotype:	IgG
Characteristics:	Purified IgG
Purification:	Purified

Target Details

Target:	Glucagon (GCG)
Alternative Name:	GLUCAGON (GCG Products)
Gene ID:	2641
UniProt:	P01275

Target Details

Pathways: [Positive Regulation of Peptide Hormone Secretion](#), [Peptide Hormone Metabolism](#), [cAMP Metabolic Process](#), [Regulation of Carbohydrate Metabolic Process](#), [Feeding Behaviour](#), [Negative Regulation of intrinsic apoptotic Signaling](#)

Application Details

Application Notes: Optimal working dilution should be determined by the investigator.

Restrictions: For Research Use only

Handling

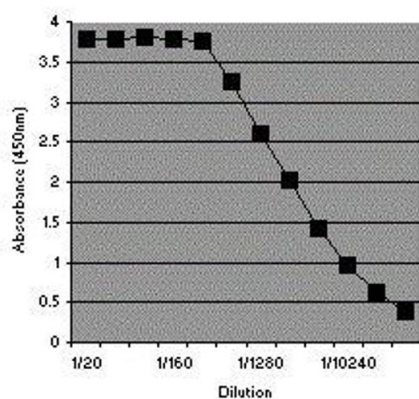
Format: Liquid

Concentration: 5.0 mg/mL

Publications

Product cited in: Woods, Lutz, Geary, Langhans: "Pancreatic signals controlling food intake; insulin, glucagon and amylin." in: **Philosophical transactions of the Royal Society of London. Series B, Biological sciences**, Vol. 361, Issue 1471, pp. 1219-35, (2006) ([PubMed](#)).

Images



ELISA

Image 1.