

Datasheet for ABIN2473959
anti-Hemoglobin antibody



[Go to Product page](#)

1 Image

Overview

Quantity:	1 mL
Target:	Hemoglobin
Reactivity:	Human, Cow
Host:	Sheep
Clonality:	Polyclonal
Conjugate:	This Hemoglobin antibody is un-conjugated
Application:	ELISA, Western Blotting (WB)

Product Details

Immunogen:	Native, from erythrocytes
Isotype:	IgG
Cross-Reactivity:	Cow (Bovine)
Characteristics:	Purified IgG
Purification:	Purified

Target Details

Target:	Hemoglobin
Abstract:	Hemoglobin Products
Gene ID:	3040, 3043
UniProt:	P68871 , P69905

Application Details

Application Notes: Optimal working dilution should be determined by the investigator.

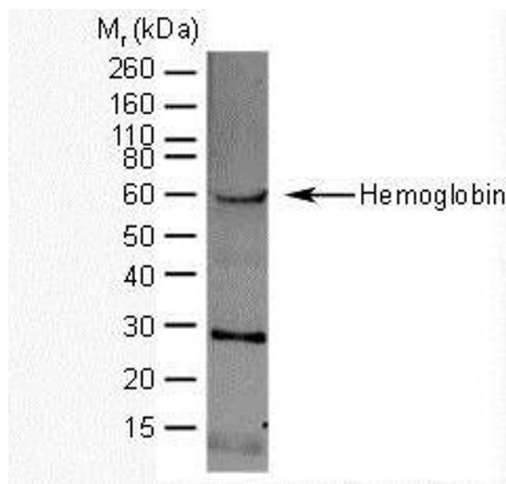
Restrictions: For Research Use only

Handling

Format: Liquid

Concentration: 5.0 mg/mL

Images



Western Blotting

Image 1.