

Datasheet for ABIN2474232

Mouse anti-Human IgA (Heavy Chain) Antibody[Go to Product page](#)**1** Image**1** Publication

Overview

Quantity:	0.2 mg
Target:	IgA
Binding Specificity:	Heavy Chain
Reactivity:	Human
Host:	Mouse
Clonality:	Monoclonal
Application:	ELISA, Western Blotting (WB), Immunohistochemistry (Frozen Sections) (IHC (fro)), Immunoprecipitation (IP)

Product Details

Immunogen:	Reduced and alkylated human IgA
Clone:	Mc24-2E11
Isotype:	IgG1
Characteristics:	Purified IgG
Purification:	Purified

Target Details

Target:	IgA
Abstract:	IgA Products
Target Type:	Antibody

Target Details

Gene ID: 3493, 3494

UniProt: [P01876](#), [P01877](#)

Application Details

Application Notes: Optimal working dilution should be determined by the investigator.

Restrictions: For Research Use only

Handling

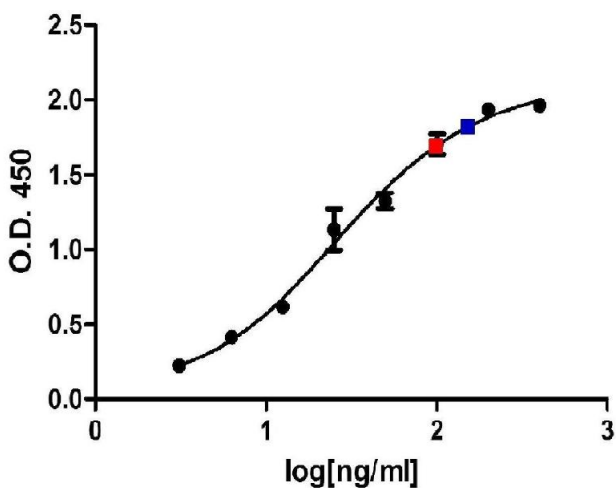
Format: Liquid

Concentration: 1 mg/mL

Publications

Product cited in: Creasey, Staalsoe, Raza, Arnot, Rowe: "Nonspecific immunoglobulin M binding and chondroitin sulfate A binding are linked phenotypes of Plasmodium falciparum isolates implicated in malaria during pregnancy." in: **Infection and immunity**, Vol. 71, Issue 8, pp. 4767-71, (2003) ([PubMed](#)).

Images



ELISA

Image 1.