

Datasheet for ABIN2474300

Mouse anti-Human IgE Antibody (HRP)[1 Image](#)[1 Publication](#)[Go to Product page](#)

Overview

Quantity: 0.5 mg

Target: IgE

Reactivity: Human

Host: Mouse

Clonality: Monoclonal

Conjugate: HRP

Application: ELISA

Product Details

Immunogen: Chimaeric human IgE

Clone: 1A2

Isotype: IgG1

Characteristics: Purified IgG conjugated to Horseradish Peroxidase (HRP)

Target Details

Target: IgE

Abstract: [IgE Products](#)

Gene ID: 3497

UniProt: [P01854](#)

Application Details

Application Notes: Optimal working dilution should be determined by the investigator.

Restrictions: For Research Use only

Handling

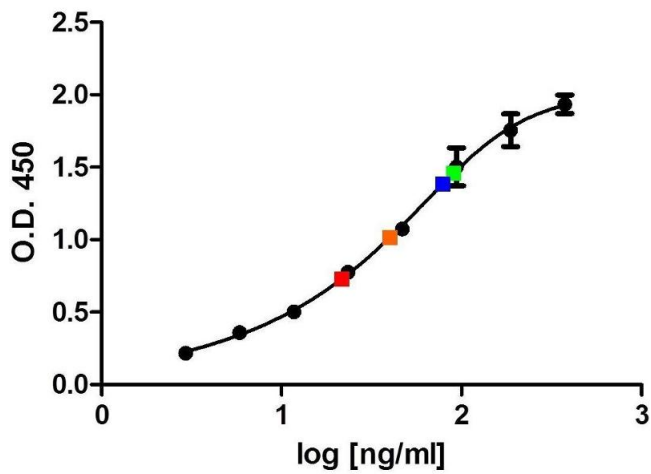
Format: Liquid

Concentration: 1.0 mg/mL

Publications

Product cited in: Vigh-Conrad, Conrad, Preuss: "A protein allergen microarray detects specific IgE to pollen surface, cytoplasmic, and commercial allergen extracts." in: **PLoS ONE**, Vol. 5, Issue 4, pp. e10174, (2010) ([PubMed](#)).

Images



ELISA

Image 1.