

Datasheet for ABIN2474939

anti-IL-15 antibody

1 Image

1 Publication



[Go to Product page](#)

Overview

| | |
|--------------|------------------------------------------------------------------------------------------------------------------------------------------------|
| Quantity: | 0.1 mg |
| Target: | IL-15 (IL15) |
| Reactivity: | Human |
| Host: | Rabbit |
| Clonality: | Polyclonal |
| Conjugate: | This IL-15 antibody is un-conjugated |
| Application: | Western Blotting (WB), ELISA, Immunoprecipitation (IP), Functional Studies (Func), Immunohistochemistry (Paraffin-embedded Sections) (IHC (p)) |

Product Details

| | |
|------------------|-------------------------|
| Immunogen: | Recombinant human IL-15 |
| Isotype: | IgG |
| Characteristics: | Purified IgG |
| Purification: | Purified |

Target Details

| | |
|-------------------|-----------------------------------------|
| Target: | IL-15 (IL15) |
| Alternative Name: | IL-15 (IL15 Products) |
| Gene ID: | 3600 |
| UniProt: | P40933 |

Target Details

Pathways: [JAK-STAT Signaling](#), [Glycosaminoglycan Metabolic Process](#)

Application Details

Application Notes: Optimal working dilution should be determined by the investigator.

Restrictions: For Research Use only

Handling

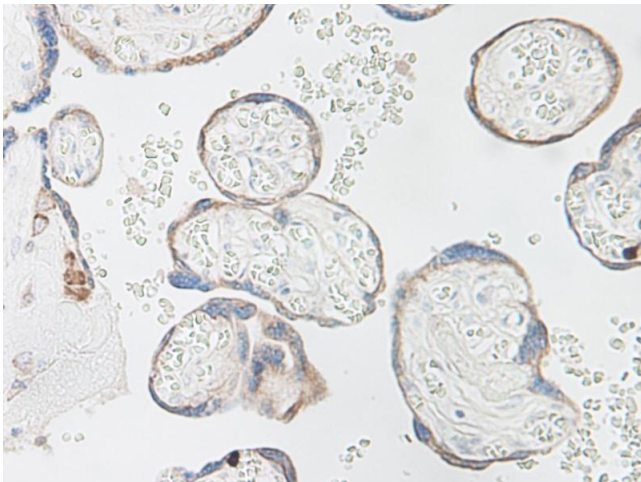
Format: Lyophilized

Concentration: 1.0 mg/mL

Publications

Product cited in: Kontos, Kourtis, Dane, Hubbell: "Engineering antigens for in situ erythrocyte binding induces T-cell deletion." in: **Proceedings of the National Academy of Sciences of the United States of America**, Vol. 110, Issue 1, pp. E60-8, (2013) ([PubMed](#)).

Images



Immunohistochemistry

Image 1.