

Datasheet for ABIN2475231
anti-KIR3DL1 antibody



[Go to Product page](#)

1 Image **2** Publications

Overview

Quantity:	0.1 mg
Target:	KIR3DL1
Reactivity:	Human
Host:	Mouse
Clonality:	Monoclonal
Conjugate:	This KIR3DL1 antibody is un-conjugated
Application:	Western Blotting (WB), ELISA, Flow Cytometry (FACS), Immunoprecipitation (IP)

Product Details

Clone:	NKVFS1
Isotype:	IgG1
Characteristics:	Purified IgG
Purification:	Purified

Target Details

Target:	KIR3DL1
Alternative Name:	KIR (KIR3DL1 Products)
Background:	Synonyms: KILLER CELL IMMUNOGLOBIN-LIKE RECEPTORS
Gene ID:	3802, 3803, 3804
UniProt:	P43626 , P43627 , P43628 , P43631 , P43632 , Q14954

Application Details

Application Notes: Optimal working dilution should be determined by the investigator.

Restrictions: For Research Use only

Handling

Format: Liquid

Concentration: 1.0 mg/mL

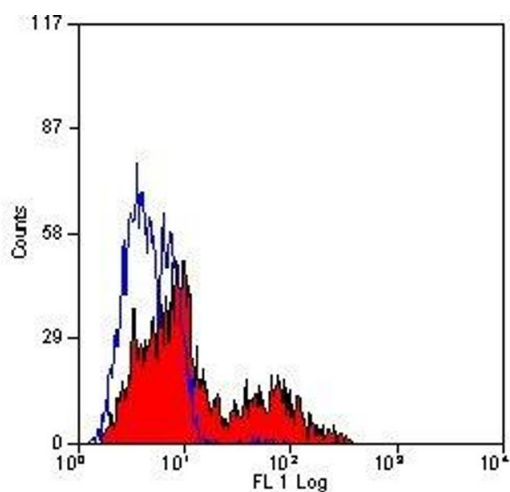
Preservative: Without preservative

Publications

Product cited in: Spaggiari, Contini, Carosio, Arvigo, Ghio, Oddone, Dondero, Zocchi, Puppo, Indiveri, Poggi: "Soluble HLA class I molecules induce natural killer cell apoptosis through the engagement of CD8: evidence for a negative regulation exerted by members of the inhibitory receptor superfamily." in: **Blood**, Vol. 99, Issue 5, pp. 1706-14, (2002) ([PubMed](#)).

Spaggiari, Contini, Dondero, Carosio, Puppo, Indiveri, Zocchi, Poggi: "Soluble HLA class I induces NK cell apoptosis upon the engagement of killer-activating HLA class I receptors through FasL-Fas interaction." in: **Blood**, Vol. 100, Issue 12, pp. 4098-107, (2002) ([PubMed](#)).

Images



Flow Cytometry

Image 1.