

Datasheet for ABIN2475367  
**anti-Luteinizing Hormone antibody**



[Go to Product page](#)

1 Image

## Overview

Quantity:	1 mg
Target:	Luteinizing Hormone (LH)
Reactivity:	Human, Rat, Dog
Host:	Mouse
Clonality:	Monoclonal
Conjugate:	This Luteinizing Hormone antibody is un-conjugated
Application:	ELISA

## Product Details

Clone:	156-10B7
Isotype:	IgG2b
Cross-Reactivity:	Dog (Canine), Rat (Rattus)
Characteristics:	Purified IgG
Purification:	Purified

## Target Details

Target:	Luteinizing Hormone (LH)
Alternative Name:	LUTEINIZING HORMONE ( <a href="#">LH Products</a> )
Target Type:	Hormone
Background:	Synonyms: LH

## Target Details

Gene ID: 1081, 3972, 25329

UniProt: [P01215](#), [P01229](#), [P01230](#), [P11962](#), [P18842](#), [Q9XSW8](#)

## Application Details

Application Notes: Optimal working dilution should be determined by the investigator.

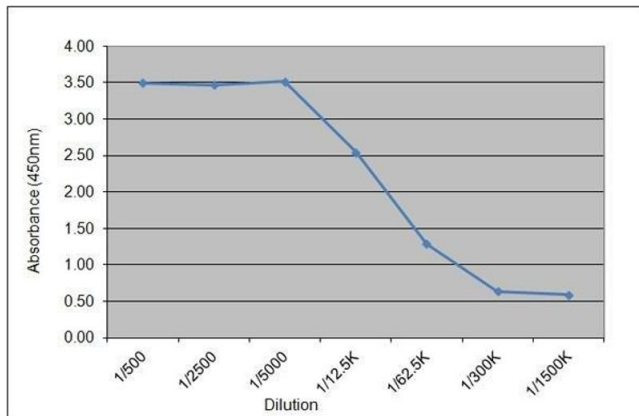
Restrictions: For Research Use only

## Handling

Format: Liquid

Concentration: 1.0 mg/mL

## Images



### ELISA

Image 1.