



Datasheet for ABIN2475711

anti-CCL20 antibody



[Go to Product page](#)

1 Image

1 Publication

Overview

Quantity:	0.1 mg
Target:	CCL20
Reactivity:	Human
Host:	Rabbit
Clonality:	Polyclonal
Conjugate:	This CCL20 antibody is un-conjugated
Application:	Western Blotting (WB), ELISA, Immunohistochemistry (Paraffin-embedded Sections) (IHC (p)), Functional Studies (Func)

Product Details

Immunogen:	Recombinant human MIP-3 alpha.
Isotype:	IgG
Characteristics:	Purified IgG
Purification:	Purified

Target Details

Target:	CCL20
Alternative Name:	MIP-3 alpha (CCL20 Products)
Background:	Synonyms: CCL20
Gene ID:	6364

Target Details

UniProt: [P78556](#)

Pathways: [The Global Phosphorylation Landscape of SARS-CoV-2 Infection](#)

Application Details

Application Notes: Optimal working dilution should be determined by the investigator.

Restrictions: For Research Use only

Handling

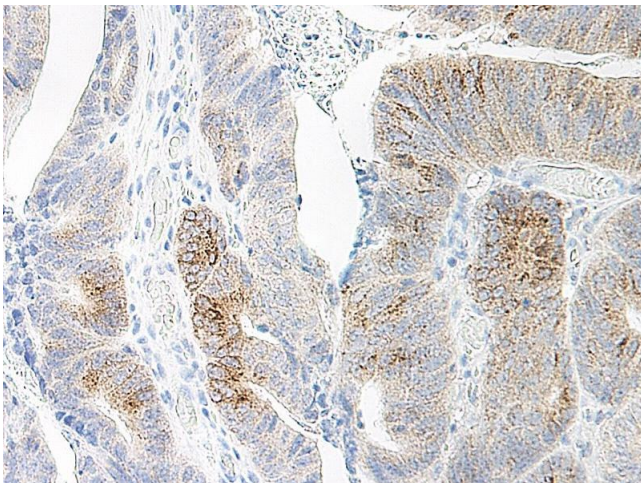
Format: Lyophilized

Concentration: 1.0 mg/mL

Publications

Product cited in: Jalili, Forouzandeh, Rezakhanlou, Hartwell, Medina, Warnock, Larijani, Ghahary: "Local expression of indoleamine 2,3 dioxygenase in syngeneic fibroblasts significantly prolongs survival of an engineered three-dimensional islet allograft." in: **Diabetes**, Vol. 59, Issue 9, pp. 2219-27, (2010) ([PubMed](#)).

Images



Immunohistochemistry

Image 1.