



Datasheet for ABIN2475804
anti-Myosin antibody (AA 12-27)



[Go to Product page](#)

1 Image

Overview

Quantity:	50 µg
Target:	Myosin
Binding Specificity:	AA 12-27
Reactivity:	Human, Mouse, Rat, Avian, Mammalian
Host:	Rabbit
Clonality:	Polyclonal
Conjugate:	This Myosin antibody is un-conjugated
Application:	Western Blotting (WB), ELISA, Immunohistochemistry (Paraffin-embedded Sections) (IHC (p))

Product Details

Immunogen:	A synthetic peptide corresponding to amino acids 12-27 of human Myosin Regulatory Light Chain.
Isotype:	IgG
Cross-Reactivity:	Bird (Avian), Mammalian, Mouse (Murine), Rat (Rattus)
Characteristics:	Purified IgG
Purification:	Purified

Target Details

Target:	Myosin
Abstract:	Myosin Products

Target Details

Background: Synonyms: LC20

Gene ID: 10398

UniProt: [P24844](#)

Application Details

Application Notes: Optimal working dilution should be determined by the investigator.

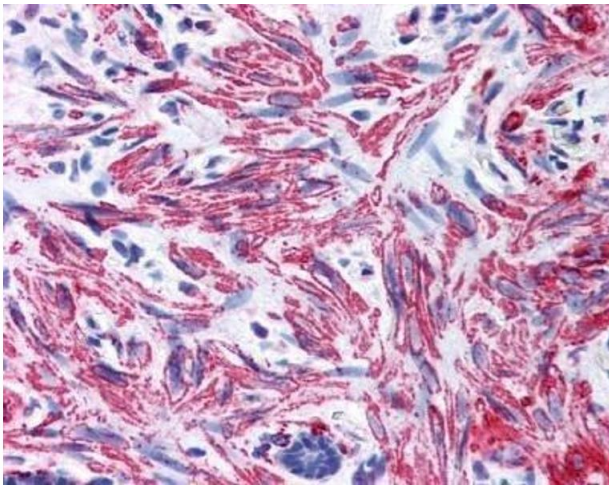
Restrictions: For Research Use only

Handling

Format: Liquid

Concentration: 0.5 mg/mL

Images



Immunohistochemistry

Image 1.