



[Go to Product page](#)

Datasheet for ABIN2475968 **anti-Orexin A antibody (AA 2-14)**

1 Image

Overview

Quantity:	1 mL
Target:	Orexin A (OXA)
Binding Specificity:	AA 2-14
Reactivity:	Human, Mouse, Rat, Pig, Cow, Dog, Chimpanzee, Horse, Rabbit, Rhesus Monkey
Host:	Sheep
Clonality:	Polyclonal
Conjugate:	This Orexin A antibody is un-conjugated
Application:	ELISA, Immunohistochemistry (Paraffin-embedded Sections) (IHC (p)), Immunohistochemistry (Frozen Sections) (IHC (fro))

Product Details

Immunogen:	Synthetic peptide, PLPDCCRQKTCSC, corresponding to amino acids 2-14 of human orexin A conjugated to KLH.
Isotype:	IgG
Cross-Reactivity:	Chimpanzee, Cow (Bovine), Dog (Canine), Horse (Equine), Mouse (Murine), Pig (Porcine), Rabbit, Rat (Rattus), Rhesus Monkey
Characteristics:	Purified IgG
Purification:	Purified

Target Details

Target:	Orexin A (OXA)
---------	----------------

Target Details

Alternative Name:	OREXIN A (OXA Products)
Gene ID:	3060
UniProt:	O43612
Pathways:	Synaptic Membrane , Feeding Behaviour

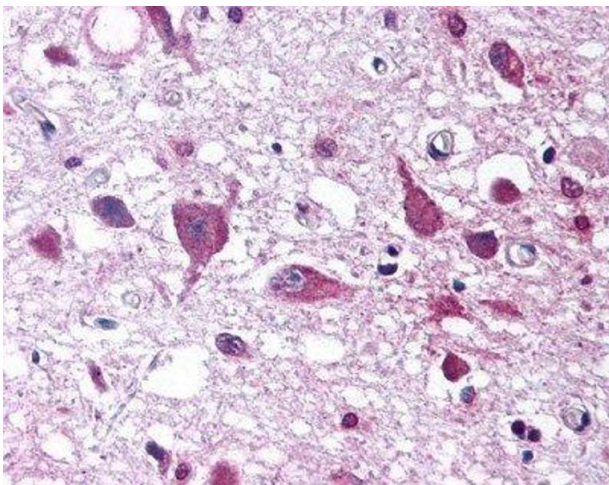
Application Details

Application Notes:	Optimal working dilution should be determined by the investigator.
Restrictions:	For Research Use only

Handling

Format:	Liquid
Concentration:	5.0 mg/mL

Images



Immunohistochemistry

Image 1.