

Datasheet for ABIN2476985
anti-TSC1 antibody (Center)



[Go to Product page](#)

1 Image

1 Publication

Overview

Quantity:	0.1 mg
Target:	TSC1
Binding Specificity:	Center
Reactivity:	Human, Mouse, Rat
Host:	Rabbit
Clonality:	Polyclonal
Conjugate:	This TSC1 antibody is un-conjugated
Application:	Western Blotting (WB), Immunohistochemistry (Paraffin-embedded Sections) (IHC (p)), Immunohistochemistry (Frozen Sections) (IHC (fro))

Product Details

Immunogen:	A 15 amino acid peptide located near the center of human TSC1.
Isotype:	IgG
Cross-Reactivity:	Mouse (Murine), Rat (Rattus)
Characteristics:	Purified IgG
Purification:	Purified

Target Details

Target:	TSC1
Alternative Name:	TSC1 (TSC1 Products)

Target Details

Background:	Synonyms: TUBEROUS SCLEROSIS COMPLEX 1
Gene ID:	7248
UniProt:	Q92574
Pathways:	RTK Signaling , AMPK Signaling , Regulation of Cell Size , Tube Formation

Application Details

Application Notes:	Optimal working dilution should be determined by the investigator.
Restrictions:	For Research Use only

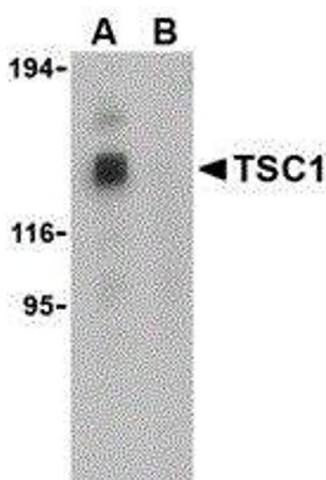
Handling

Format:	Liquid
Concentration:	1.0 mg/mL

Publications

Product cited in:	Boyle, Simonet, Lacey: "Osteoclast differentiation and activation." in: Nature , Vol. 423, Issue 6937, pp. 337-42, (2003) (PubMed).
-------------------	--

Images



Western Blotting

Image 1.