

Datasheet for ABIN2477416
anti-Amylin/DAP antibody



[Go to Product page](#)

1 Image

2 Publications

Overview

Quantity:	2 mL
Target:	Amylin/DAP (IAPP)
Reactivity:	Human
Host:	Mouse
Clonality:	Monoclonal
Conjugate:	This Amylin/DAP antibody is un-conjugated
Application:	Immunofluorescence (IF), Immunohistochemistry (Paraffin-embedded Sections) (IHC (p)), Immunohistochemistry (Frozen Sections) (IHC (fro))

Product Details

Immunogen:	CATQRLANFLV coupled to tuberculin
Clone:	R10-99
Isotype:	IgG1
Characteristics:	Tissue Culture Supernatant

Target Details

Target:	Amylin/DAP (IAPP)
Alternative Name:	AMYLIN (IAPP Products)
Gene ID:	3375
UniProt:	P10997

Target Details

Pathways: [Hormone Activity, Feeding Behaviour](#)

Application Details

Application Notes: Optimal working dilution should be determined by the investigator.

Restrictions: For Research Use only

Handling

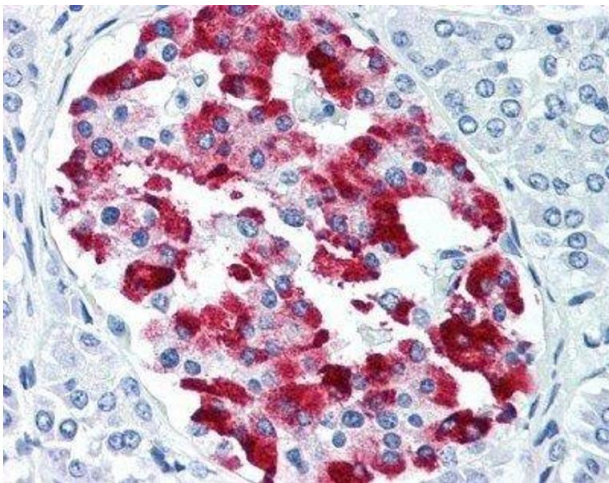
Format: Liquid

Publications

Product cited in: Bhattacharya, Latha, Kumresan, Singh: "Cloning and expression of human islet amyloid polypeptide in cultured cells." in: **Biochemical and biophysical research communications**, Vol. 356, Issue 3, pp. 622-8, (2007) ([PubMed](#)).

Gong, Liu, Zeng, Peng, Chen, Zhou, Li: "Amylin deposition in the kidney of patients with diabetic nephropathy." in: **Kidney international**, Vol. 72, Issue 2, pp. 213-8, (2007) ([PubMed](#)).

Images



Immunohistochemistry

Image 1.