



## Datasheet for ABIN2477457 **anti-APAF1 antibody (AA 12-28)**



[Go to Product page](#)

### 1 Image

#### Overview

Quantity:	0.1 mg
Target:	APAF1
Binding Specificity:	AA 12-28
Reactivity:	Human, Mouse
Host:	Rabbit
Clonality:	Polyclonal
Conjugate:	This APAF1 antibody is un-conjugated
Application:	Western Blotting (WB), Immunohistochemistry (Paraffin-embedded Sections) (IHC (p))

#### Product Details

Immunogen:	Synthetic peptide corresponding to amino acids 12-28 of human Apaf1
Isotype:	IgG
Specificity:	<p>Apaf1 (Apoptosis protease activating factor 1) is the mammalian homologue of the CED-4 cell death protein in <i>C. Elegans</i>. Apaf1 binds to cytochrome C and caspase-9 leading to caspase-9 activation, resulting in the beginning of the proteolytic cascade characteristic of apoptosis.</p> <p>Apaf1 can also associate with caspase-4 and caspase-8. AHP487 recognises a 130kD band in Western blots.</p>
Cross-Reactivity:	Mouse (Murine)
Characteristics:	Purified IgG
Purification:	Purified

## Target Details

Target:	APAF1
Alternative Name:	APAF1 ( <a href="#">APAF1 Products</a> )
Gene ID:	317
UniProt:	<a href="#">O14727</a>
Pathways:	<a href="#">p53 Signaling</a> , <a href="#">Apoptosis</a> , <a href="#">Caspase Cascade in Apoptosis</a> , <a href="#">Tube Formation</a> , <a href="#">Positive Regulation of Endopeptidase Activity</a>

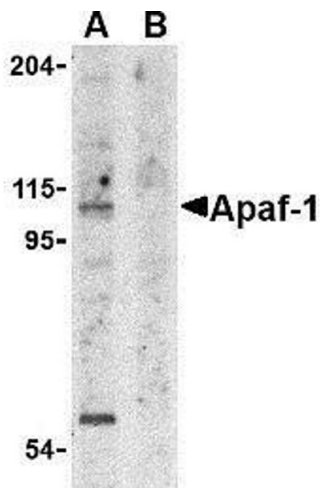
## Application Details

Application Notes:	Optimal working dilution should be determined by the investigator.
Restrictions:	For Research Use only

## Handling

Format:	Liquid
Concentration:	0.5 mg/mL

## Images



### Western Blotting

Image 1.