



Datasheet for ABIN2477779

anti-CRP antibody



[Go to Product page](#)

1 Image

1 Publication

Overview

Quantity:	1 mL
Target:	CRP
Reactivity:	Human
Host:	Sheep
Clonality:	Polyclonal
Conjugate:	This CRP antibody is un-conjugated
Application:	ELISA, Immunohistochemistry (Frozen Sections) (IHC (fro))

Product Details

Immunogen:	Native, from serum
Isotype:	IgG
Characteristics:	Purified IgG
Purification:	Purified

Target Details

Target:	CRP
Alternative Name:	C-REACTIVE PROTEIN (CRP Products)
Background:	Synonyms: CRP
Gene ID:	1401
UniProt:	P02741

Target Details

Pathways: [Carbohydrate Homeostasis](#)

Application Details

Application Notes: Optimal working dilution should be determined by the investigator.

Restrictions: For Research Use only

Handling

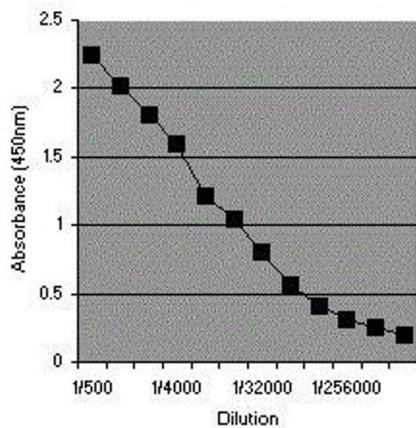
Format: Liquid

Concentration: 5.0 mg/mL

Publications

Product cited in: Boyle, Simonet, Lacey: "Osteoclast differentiation and activation." in: **Nature**, Vol. 423, Issue 6937, pp. 337-42, (2003) ([PubMed](#)).

Images



ELISA

Image 1.