

Datasheet for ABIN2478101

anti-LAMP2 antibody**1** Image**1** Publication[Go to Product page](#)

Overview

Quantity:	0.1 mg
Target:	LAMP2
Reactivity:	Mouse
Host:	Rat
Clonality:	Monoclonal
Conjugate:	This LAMP2 antibody is un-conjugated
Application:	Western Blotting (WB), Flow Cytometry (FACS), Immunoprecipitation (IP), Immunohistochemistry (Frozen Sections) (IHC (fro)), Immunohistochemistry (Paraffin- embedded Sections) (IHC (p))

Product Details

Clone:	M3-84
Isotype:	IgG1
Characteristics:	Purified IgG
Purification:	Purified

Target Details

Target:	LAMP2
Alternative Name:	CD107b (LAMP2 Products)
Background:	Synonyms: MAC-3

Target Details

Gene ID: 16784

UniProt: [P17047](#)

Pathways: [Autophagy](#)

Application Details

Application Notes: Optimal working dilution should be determined by the investigator.

Restrictions: For Research Use only

Handling

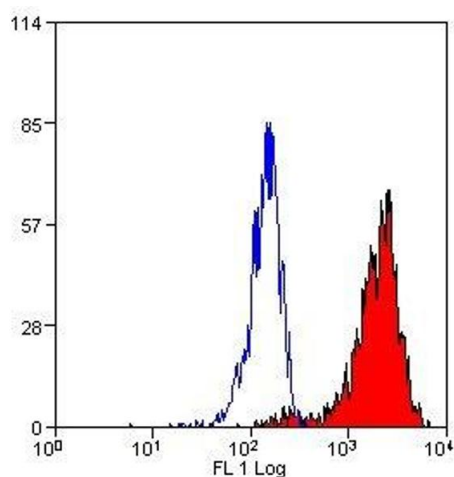
Format: Liquid

Concentration: 1.0 mg/mL

Publications

Product cited in: Ulrich, Kalkuhl, Deschl, Baumgärtner: "Machine learning approach identifies new pathways associated with demyelination in a viral model of multiple sclerosis." in: **Journal of cellular and molecular medicine**, Vol. 14, Issue 1-2, pp. 434-48, (2010) ([PubMed](#)).

Images



Flow Cytometry

Image 1.