

Datasheet for ABIN2478367

anti-CD13 antibody[Go to Product page](#)**1** Image**2** Publications

Overview

| | |
|--------------|---|
| Quantity: | 0.1 mg |
| Target: | CD13 (ANPEP) |
| Reactivity: | Mouse |
| Host: | Rat |
| Clonality: | Monoclonal |
| Conjugate: | This CD13 antibody is un-conjugated |
| Application: | Flow Cytometry (FACS), Immunofluorescence (IF), Immunohistochemistry (Frozen Sections) (IHC (fro)), Immunohistochemistry (Paraffin-embedded Sections) (IHC (p)) |

Product Details

| | |
|------------------|----------------------|
| Immunogen: | Mouse intestinal APN |
| Clone: | R3-63 |
| Isotype: | IgG2a |
| Characteristics: | Purified IgG |
| Purification: | Purified |

Target Details

| | |
|-------------------|---------------------------------------|
| Target: | CD13 (ANPEP) |
| Alternative Name: | CD13 (ANPEP Products) |
| Background: | Synonyms: AMINOPEPTIDASE N |

Target Details

Gene ID: 16790

UniProt: [P97449](#)

Pathways: [Peptide Hormone Metabolism, Regulation of Systemic Arterial Blood Pressure by Hormones](#)

Application Details

Application Notes: Optimal working dilution should be determined by the investigator.

Restrictions: For Research Use only

Handling

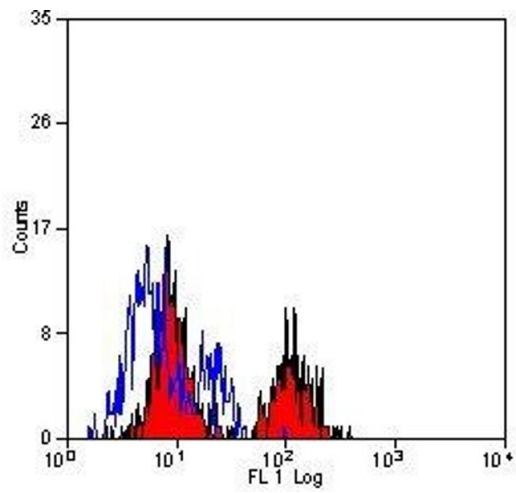
Format: Liquid

Concentration: 1.0 mg/mL

Publications

Product cited in: Kamoun, Ley, Farrar, Duyverman, Lahdenranta, Lacorre, Batchelor, di Tomaso, Duda, Munn, Fukumura, Sorensen, Jain: "Edema control by cediranib, a vascular endothelial growth factor receptor-targeted kinase inhibitor, prolongs survival despite persistent brain tumor growth in mice." in: **Journal of clinical oncology : official journal of the American Society of Clinical Oncology**, Vol. 27, Issue 15, pp. 2542-52, (2009) ([PubMed](#)).

Rangel, Sun, Guzman-Rojas, Ozawa, Sun, Giordano, Van Pelt, Tinkey, Behringer, Sidman, Arap, Pasqualini: "Impaired angiogenesis in aminopeptidase N-null mice." in: **Proceedings of the National Academy of Sciences of the United States of America**, Vol. 104, Issue 11, pp. 4588-93, (2007) ([PubMed](#)).



Flow Cytometry

Image 1.