

Datasheet for ABIN2478659

anti-CD16 antibody[Go to Product page](#)**1** Image**2** Publications

Overview

Quantity:	0.1 mg
Target:	CD16
Reactivity:	Human, Pig, Cow, Sheep, Horse
Host:	Mouse
Clonality:	Monoclonal
Conjugate:	This CD16 antibody is un-conjugated
Application:	Flow Cytometry (FACS), Functional Studies (Func)

Product Details

Clone:	KD1
Isotype:	IgG2a
Cross-Reactivity:	Cow (Bovine), Horse (Equine), Pig (Porcine), Sheep (Ovine)
Characteristics:	Purified IgG
Purification:	Purified

Target Details

Target:	CD16
Alternative Name:	CD16 (CD16 Products)
Background:	Synonyms: FcRIII
Gene ID:	2214, 2215, 281766

Target Details

UniProt: [O75015](#), [P08637](#), [P79107](#)

Pathways: [Regulation of Leukocyte Mediated Immunity](#), [Positive Regulation of Immune Effector Process](#)

Application Details

Application Notes: Optimal working dilution should be determined by the investigator.

Restrictions: For Research Use only

Handling

Format: Liquid

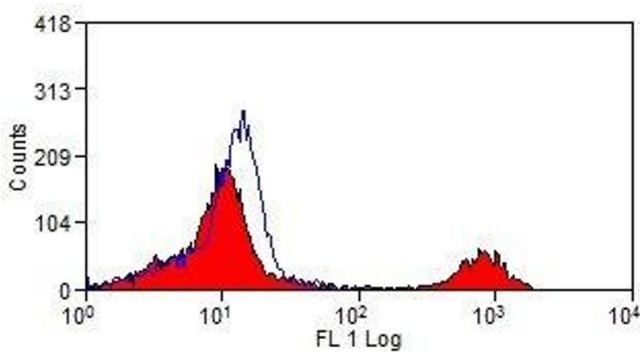
Concentration: 1.0 mg/mL

Publications

Product cited in: Elhmouzi-Younes, Boysen, Pende, Storset, Le Vern, Laurent, Drouet: "Ovine CD16+/CD14- blood lymphocytes present all the major characteristics of natural killer cells." in: **Veterinary research**, Vol. 41, Issue 1, pp. 4, (2009) ([PubMed](#)).

Boysen, Gunnes, Pende, Valheim, Storset: "Natural killer cells in lymph nodes of healthy calves express CD16 and show both cytotoxic and cytokine-producing properties." in: **Developmental and comparative immunology**, Vol. 32, Issue 7, pp. 773-83, (2008) ([PubMed](#)).

Images



Flow Cytometry

Image 1.