

Datasheet for ABIN2478768
anti-Sialoadhesin/CD169 antibody



[Go to Product page](#)

1 Image

1 Publication

Overview

Quantity:	0.1 mg
Target:	Sialoadhesin/CD169 (SIGLEC1)
Reactivity:	Rat
Host:	Mouse
Clonality:	Monoclonal
Conjugate:	This Sialoadhesin/CD169 antibody is un-conjugated
Application:	Flow Cytometry (FACS), Immunoprecipitation (IP), Immunohistochemistry (Frozen Sections) (IHC (fro)), Immunofluorescence (IF)

Product Details

Clone:	ED3
Isotype:	IgG2a
Characteristics:	Purified IgG
Purification:	Purified

Target Details

Target:	Sialoadhesin/CD169 (SIGLEC1)
Alternative Name:	CD169 (SIGLEC1 Products)
Background:	Synonyms: ED3

Application Details

Application Notes: Optimal working dilution should be determined by the investigator.

Restrictions: For Research Use only

Handling

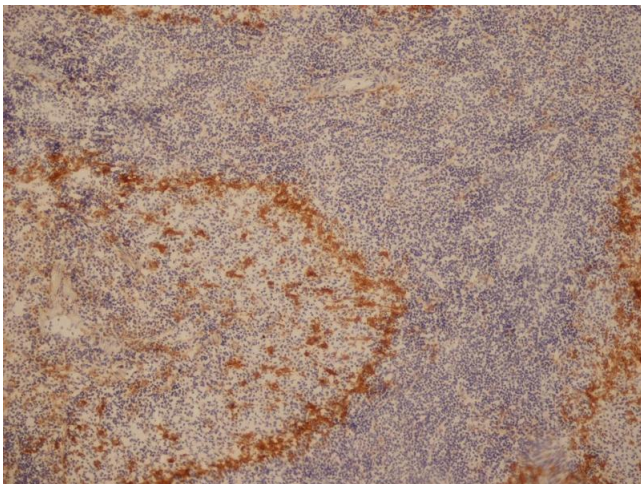
Format: Liquid

Concentration: 0.5 mg/mL

Publications

Product cited in: Kallio, Lemström, Häyry, Ryan, Koskinen: "Blockade of complement inhibits obliterative bronchiolitis in rat tracheal allografts." in: **American journal of respiratory and critical care medicine**, Vol. 161, Issue 4 Pt 1, pp. 1332-9, (2000) ([PubMed](#)).

Images



Immunohistochemistry

Image 1.