

Datasheet for ABIN2479018
anti-CD1b3 antibody (PE)



[Go to Product page](#)

1 Image **2** Publications

Overview

Quantity:	100 tests
Target:	CD1b3
Reactivity:	Guinea Pig
Host:	Mouse
Clonality:	Monoclonal
Conjugate:	This CD1b3 antibody is conjugated to PE
Application:	Flow Cytometry (FACS)

Product Details

Immunogen:	Guinea pig thymocytes
Clone:	MsGP9
Isotype:	IgG1
Characteristics:	Purified IgG conjugated to R. Phycoerythrin (RPE)

Target Details

Target:	CD1b3
Alternative Name:	CD1b3 (CD1b3 Products)
Gene ID:	100379551
UniProt:	Q9QZZ0

Application Details

Application Notes: Optimal working dilution should be determined by the investigator.

Restrictions: For Research Use only

Handling

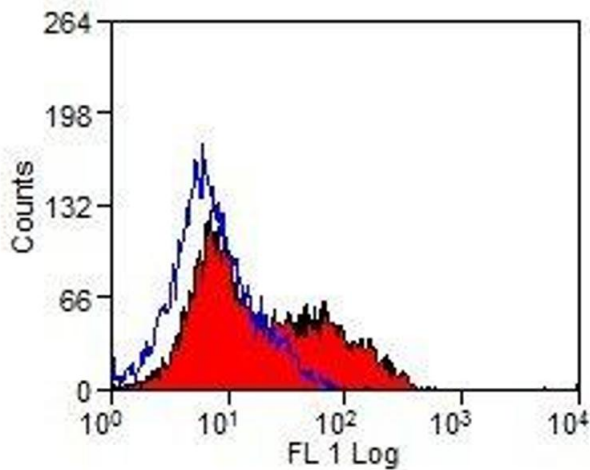
Format: Lyophilized

Publications

Product cited in: Hiromatsu, Dascher, Sugita, Gingrich-Baker, Behar, LeClair, Brenner, Porcelli: "Characterization of guinea-pig group 1 CD1 proteins." in: **Immunology**, Vol. 106, Issue 2, pp. 159-72, (2002) ([PubMed](#)).

Dascher, Hiromatsu, Xiong, Sugita, Buhlmann, Dodge, Lee, Roura-Mir, Watts, Roy, Behar, Clemens, Porcelli, Brenner: "Conservation of CD1 intracellular trafficking patterns between mammalian species." in: **Journal of immunology (Baltimore, Md. : 1950)**, Vol. 169, Issue 12, pp. 6951-8, (2002) ([PubMed](#)).

Images



Flow Cytometry

Image 1.