



[Go to Product page](#)

Datasheet for ABIN2479600

anti-PDCD1LG2 antibody (Center)

1 Image

3 Publications

Overview

Quantity:	0.1 mg
Target:	PDCD1LG2
Binding Specificity:	Center
Reactivity:	Human, Mouse, Rat
Host:	Rabbit
Clonality:	Polyclonal
Conjugate:	This PDCD1LG2 antibody is un-conjugated
Application:	Western Blotting (WB), Immunohistochemistry (Paraffin-embedded Sections) (IHC (p))

Product Details

Immunogen:	A peptide corresponding to a 16 amino acid sequence from near the center of Human CD273.
Isotype:	IgG
Cross-Reactivity:	Mouse (Murine), Rat (Rattus)
Characteristics:	Purified IgG
Purification:	Purified

Target Details

Target:	PDCD1LG2
Alternative Name:	CD273 (PDCD1LG2 Products)
Background:	Synonyms: PD-L2

Target Details

Gene ID: 80380

UniProt: [Q9BQ51](#)

Application Details

Application Notes: Optimal working dilution should be determined by the investigator.

Restrictions: For Research Use only

Handling

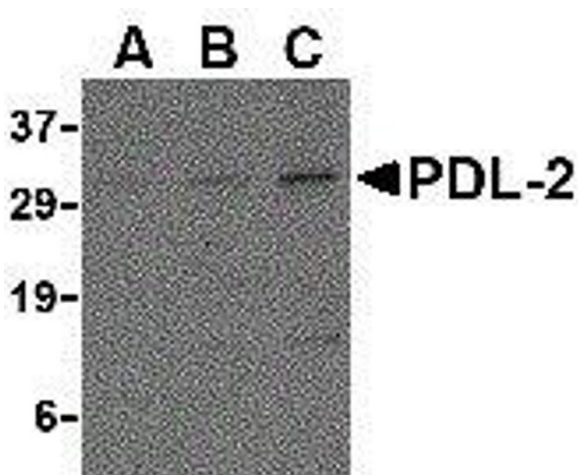
Format: Liquid

Concentration: 1.0 mg/mL

Publications

Product cited in: Jalili, Forouzandeh, Rezakhanlou, Hartwell, Medina, Warnock, Larijani, Ghahary: "Local expression of indoleamine 2,3 dioxygenase in syngeneic fibroblasts significantly prolongs survival of an engineered three-dimensional islet allograft." in: **Diabetes**, Vol. 59, Issue 9, pp. 2219-27, (2010) ([PubMed](#)).

Images



Western Blotting

Image 1.