

Datasheet for ABIN2479883  
**anti-CD300a antibody (PE)**



[Go to Product page](#)

**1** Image **2** Publications

## Overview

Quantity:	100 tests
Target:	CD300a (CD300A)
Reactivity:	Human
Host:	Mouse
Clonality:	Monoclonal
Conjugate:	This CD300a antibody is conjugated to PE
Application:	Flow Cytometry (FACS)

## Product Details

Immunogen:	Polyclonal population of NK cells
Clone:	P192
Isotype:	IgG2a
Characteristics:	Purified IgG conjugated to R. Phycoerythrin (RPE)

## Target Details

Target:	CD300a (CD300A)
Alternative Name:	CD300a ( <a href="#">CD300A Products</a> )
Background:	Synonyms: IRp60
Gene ID:	11314
UniProt:	<a href="#">Q9UGN4</a>

## Target Details

---

Pathways: [Regulation of Leukocyte Mediated Immunity, Positive Regulation of Immune Effector Process](#)

## Application Details

---

Application Notes: Optimal working dilution should be determined by the investigator.

Restrictions: For Research Use only

## Handling

---

Format: Lyophilized

## Publications

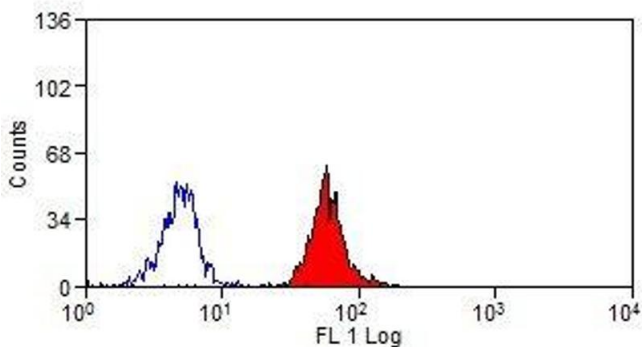
---

Product cited in: Bachelet, Munitz, Levi-Schaffer: "Abrogation of allergic reactions by a bispecific antibody fragment linking IgE to CD300a." in: **The Journal of allergy and clinical immunology**, Vol. 117, Issue 6, pp. 1314-20, (2006) ([PubMed](#)).

Bachelet, Munitz, Moretta, Moretta, Levi-Schaffer: "The inhibitory receptor IRp60 (CD300a) is expressed and functional on human mast cells." in: **Journal of immunology (Baltimore, Md. : 1950)**, Vol. 175, Issue 12, pp. 7989-95, (2005) ([PubMed](#)).

## Images

---



### Flow Cytometry

Image 1.