

Datasheet for ABIN2479990
anti-Fc gamma RII (CD32) antibody



[Go to Product page](#)

1 Image **2** Publications

Overview

Quantity:	0.2 mg
Target:	Fc gamma RII (CD32)
Reactivity:	Human, Dog, Rhesus Monkey, Pig
Host:	Mouse
Clonality:	Monoclonal
Conjugate:	Un-conjugated
Application:	Flow Cytometry (FACS), Immunoprecipitation (IP), Immunohistochemistry (Frozen Sections) (IHC (fro)), Functional Studies (Func)

Product Details

Immunogen:	K562 cell line
Clone:	AT10
Isotype:	IgG1
Cross-Reactivity:	Dog (Canine), Pig (Porcine), Rhesus Monkey
Characteristics:	Purified IgG
Purification:	Purified

Target Details

Target:	Fc gamma RII (CD32)
Alternative Name:	CD32 (CD32 Products)

Target Details

Background:	Synonyms: FcRII
Gene ID:	2212, 2213, 9103
UniProt:	P12318 , P31994 , P31995

Application Details

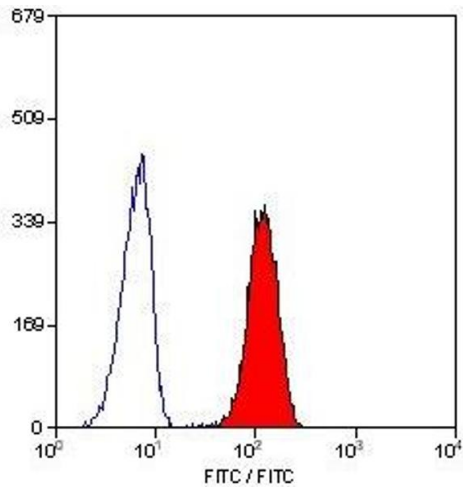
Application Notes:	Optimal working dilution should be determined by the investigator.
Restrictions:	For Research Use only

Handling

Format:	Liquid
Concentration:	1 mg/mL

Publications

Product cited in:	<p>Su, Li, Edberg, Wu, Ferguson, Kimberly et al.: "A promoter haplotype of the immunoreceptor tyrosine-based inhibitory motif-bearing FcγRIIb alters receptor expression and associates with autoimmunity. II. Differential binding of GATA4 and ..." in: Journal of immunology (Baltimore, Md. : 1950), Vol. 172, Issue 11, pp. 7192-9, (2004) (PubMed).</p> <p>Pawar, Shin, Mousa, Ross, Konstantopoulos: "Fluid shear regulates the kinetics and receptor specificity of Staphylococcus aureus binding to activated platelets." in: Journal of immunology (Baltimore, Md. : 1950), Vol. 173, Issue 2, pp. 1258-65, (2004) (PubMed).</p>
-------------------	--



Flow Cytometry

Image 1.