

Datasheet for ABIN2480813
anti-ITGA6 antibody (PE)



[Go to Product page](#)

1 Image **2** Publications

Overview

| | |
|--------------|---|
| Quantity: | 100 tests |
| Target: | ITGA6 |
| Reactivity: | Rat |
| Host: | Mouse |
| Clonality: | Monoclonal |
| Conjugate: | This ITGA6 antibody is conjugated to PE |
| Application: | Flow Cytometry (FACS) |

Product Details

| | |
|------------------|---|
| Immunogen: | Rat oesophageal carcinoma cell line B2T |
| Clone: | Mab-5A |
| Isotype: | IgG1 |
| Characteristics: | Purified IgG conjugated to R. Phycoerythrin (RPE) |

Target Details

| | |
|-------------------|---|
| Target: | ITGA6 |
| Alternative Name: | CD49f (ITGA6 Products) |
| Background: | Synonyms: INTEGRIN ALPHA 6 CHAIN, VLA-6 |
| Pathways: | CXCR4-mediated Signaling Events , Brown Fat Cell Differentiation , Integrin Complex |

Application Details

Application Notes: Optimal working dilution should be determined by the investigator.

Restrictions: For Research Use only

Handling

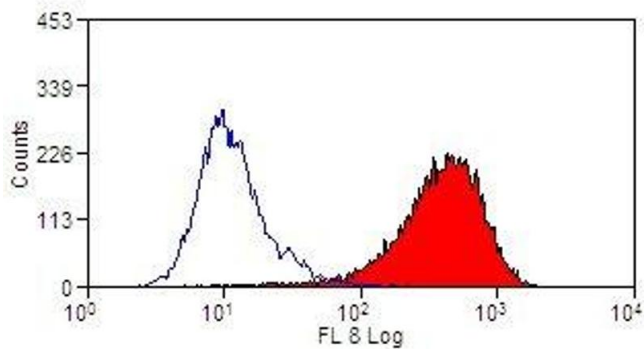
Format: Lyophilized

Publications

Product cited in: DSouza, Pathak, Upadhyay, Gaonkar, DSouza, Sonawane, Gill-Sharma, Balasinor: "Disruption of tubulobulbar complex by high intratesticular estrogens leading to failed spermiation." in: **Endocrinology**, Vol. 150, Issue 4, pp. 1861-9, (2009) ([PubMed](#)).

Stevenson, McGlynn, Hodge, McLinden, George, Davies, Shiels: "Isolation, characterization, and differentiation of thy1.1-sorted pancreatic adult progenitor cell populations." in: **Stem cells and development**, Vol. 18, Issue 10, pp. 1389-98, (2009) ([PubMed](#)).

Images



Flow Cytometry

Image 1.