

Datasheet for ABIN2481308

anti-HSP90 alpha/beta antibody (AA 291-304) (Atto 390)[Go to Product page](#)**4** Images

Overview

Quantity:	100 µg
Target:	HSP90 alpha/beta
Binding Specificity:	AA 291-304
Reactivity:	Human
Host:	Mouse
Clonality:	Monoclonal
Conjugate:	This HSP90 alpha/beta antibody is conjugated to Atto 390
Application:	Western Blotting (WB), ELISA, Immunohistochemistry (IHC), Immunofluorescence (IF), Immunocytochemistry (ICC)

Product Details

Immunogen:	Recombinant human HSP90alpha, Specificity mapped to amino acids 291-304
Clone:	Hyb-K41220A
Isotype:	IgG2a
Specificity:	Detects 90 kDa. Will detect both alpha (inducible) and beta (constitutively-expressed) forms.
Cross-Reactivity:	Human, Mouse, Rat, Saccharomyces cerevisiae
Purification:	Protein G Purified

Target Details

Target:	HSP90 alpha/beta
---------	------------------

Target Details

Alternative Name: [HSP90 alpha/beta \(HSP90 alpha/beta Products\)](#)

Background: HSP90 is an abundantly and ubiquitously expressed heat shock protein. It is understood to exist in two principal forms α and β , which share 85 % sequence amino acid homology. The two isoforms of HSP90 are expressed in the cytosolic compartment (1). Despite the similarities, HSP90 α exists predominantly as a homodimer while HSP90 β exists mainly as a monomer (2). From a functional perspective, HSP90 participates in the folding, assembly, maturation, and stabilization of specific proteins as an integral component of a chaperone complex (3-6). Furthermore, HSP90 is highly conserved between species, having 60 % and 78 % amino acid similarity between mammalian and the corresponding yeast and Drosophila proteins, respectively. HSP90 is a highly conserved and essential stress protein that is expressed in all eukaryotic cells. Despite its label of being a heat-shock protein, HSP90 is one of the most highly expressed proteins in unstressed cells (1-2 % of cytosolic protein). It carries out a number of housekeeping functions - including controlling the activity, turnover, and trafficking of a variety of proteins. Most of the HSP90-regulated proteins that have been discovered to date are involved in cell signaling (7-8). The number of proteins now known to interact with HSP90 is about 100. Target proteins include the kinases v-Src, Wee1, and c-Raf, transcriptional regulators such as p53 and steroid receptors, and the polymerases of the hepatitis B virus and telomerase (5). When bound to ATP, HSP90 interacts with co-chaperones Cdc37, p23, and an assortment of immunophilin-like proteins, forming a complex that stabilizes and protects target proteins from proteasomal degradation. In most cases, HSP90-interacting proteins have been shown to co-precipitate with HSP90 when carrying out immunoadsorption studies, and to exist in cytosolic heterocomplexes with it. In a number of cases, variations in HSP90 expression or HSP90 mutation has been shown to degrade signaling function via the protein or to impair a specific function of the protein (such as steroid binding, kinase activity) *in vivo*. Ansamycin antibiotics, such as geldanamycin and radicicol, inhibit HSP90 function (9). For more information visit our HSP90 Scientific Resource Guide at <http://www.HSP90.ca>.

Gene ID: 3326, 3320

NCBI Accession: [NP_031381](#), [NP_001017963](#)

UniProt: [P08238](#), [P07900](#)

Application Details

Application Notes:

- WB (1:1000)
- IHC (1:100)
- ICC/IF (1:100)

Application Details

- optimal dilutions for assays should be determined by the user.

Comment: 1 µg/ml was sufficient for detection of HSP90αβ in 20 µg of heat shocked HeLa cell lysate by colorimetric immunoblot analysis using Goat Anti-Mouse IgG:HRP as the secondary.

Restrictions: For Research Use only

Handling

Format: Liquid

Concentration: 1 mg/mL

Buffer: PBS pH 7.2, 50 % glycerol, 0.09 % sodium azide, Storage buffer may change when conjugated

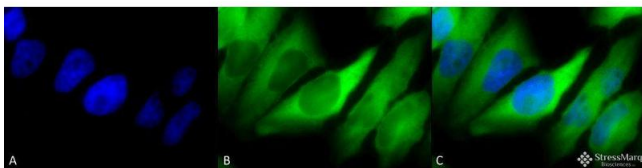
Preservative: Sodium azide

Precaution of Use: This product contains Sodium azide: a POISONOUS AND HAZARDOUS SUBSTANCE which should be handled by trained staff only.

Storage: 4 °C

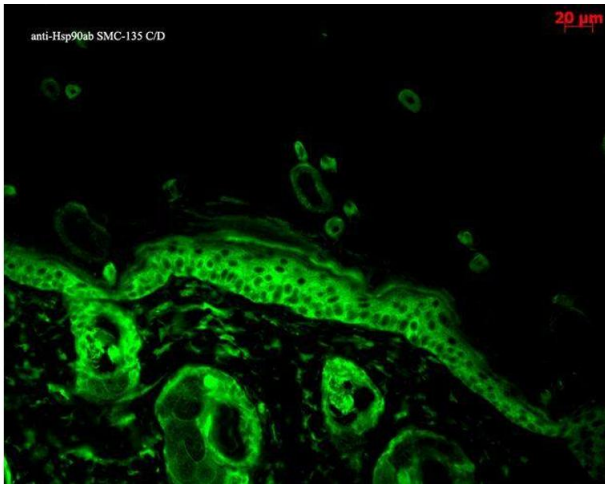
Storage Comment: Conjugated antibodies should be stored at 4°C

Images



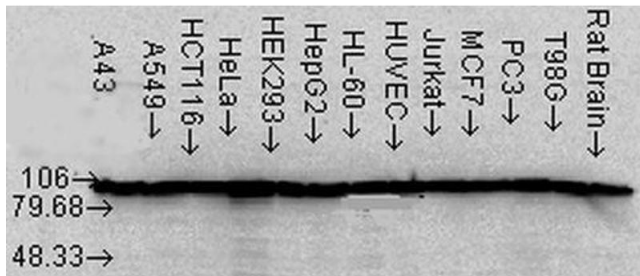
Immunofluorescence (fixed cells)

Image 1. Immunocytochemistry/Immunofluorescence analysis using Mouse Anti-Hsp90 alpha/beta Monoclonal Antibody, Clone K41220A . Tissue: HeLa Cells. Species: Human. Fixation: 2% Formaldehyde for 20 min at RT. Primary Antibody: Mouse Anti-Hsp90 alpha/beta Monoclonal Antibody at 1:100 for 12 hours at 4°C. Secondary Antibody: FITC Goat Anti-Mouse (green) at 1:200 for 2 hours at RT. Counterstain: DAPI (blue) nuclear stain at 1:40000 for 2 hours at RT. Localization: Cytoplasm. Melanosome. Magnification: 100x. (A) DAPI (blue) nuclear stain. (B) Anti-Hsp90 alpha/beta Antibody. (C) Composite.



Immunohistochemistry

Image 2. Immunohistochemistry analysis using Mouse Anti-Hsp90 alpha Monoclonal Antibody, Clone K41220A . Tissue: backskin. Species: Mouse. Fixation: Bouin's Fixative and paraffin-embedded. Primary Antibody: Mouse Anti-Hsp90 alpha Monoclonal Antibody at 1:100 for 1 hour at RT. Secondary Antibody: FITC Goat Anti-Mouse (green) at 1:50 for 1 hour at RT. Localization: Epidermis.



Western Blotting

Image 3. Western Blot analysis of Human Cell lysates showing detection of Hsp90 alpha protein using Mouse Anti-Hsp90 alpha Monoclonal Antibody, Clone K41220A . Load: 15 µg. Block: 1.5% BSA for 30 minutes at RT. Primary Antibody: Mouse Anti-Hsp90 alpha Monoclonal Antibody at 1:1000 for 2 hours at RT. Secondary Antibody: Sheep Anti-Mouse IgG: HRP for 1 hour at RT.

Please check the [product details page](#) for more images. Overall 4 images are available for ABIN2481308.