

Datasheet for ABIN2481463
anti-AHSA1 antibody (Atto 488)[Go to Product page](#)

4 Images

Overview

Quantity:	100 µg
Target:	AHSA1
Reactivity:	Mouse
Host:	Rat
Clonality:	Monoclonal
Conjugate:	This AHSA1 antibody is conjugated to Atto 488
Application:	Western Blotting (WB), ELISA, Immunohistochemistry (IHC), Immunoprecipitation (IP), Immunocytochemistry (ICC), Immunofluorescence (IF)

Product Details

Immunogen:	Recombinant Full Length Mouse Aha1 Protein
Clone:	25F2-D9
Isotype:	IgG2a kappa
Specificity:	Detects ~38 kDa. Can run up to 45 kDa on SDS Page.
Cross-Reactivity:	Human, Mouse, Rat
Purification:	Protein G Purified

Target Details

Target:	AHSA1
Alternative Name:	AHA1 (AHSA1 Products)

Target Details

Background: Aha1 is a member of the HSP90 cochaperone family, and is thought to stimulate HSP90 ATPase activity by competing with p23 and other co-chaperones for HSP90 binding (1, 2). It may affect a step in the endoplasmic reticulum to Golgi trafficking. Aha1 also interacts with HSPCA/HSP90 and with the cytoplasmic tail of the vesicular stomatitis virus glycoproteins (VSV G) (3). Aha1 is expressed in numerous tissues, including the brain, heart, skeletal muscle, and kidney, and at low levels, the liver and placenta. Aha1 might be a potential therapeutic strategy to increase sensitivity to HSP inhibitors (4).

Gene ID: 217737

NCBI Accession: [NP_666148](#)

UniProt: [Q8BK64](#)

Application Details

Application Notes:

- WB (1:1000)
- IHC (1:100)
- ICC/IF (1:1000)
- IP (1:1000)
- optimal dilutions for assays should be determined by the user.

Comment: 1 µg/ml of ABIN2481463 was sufficient for detection of Aha1 in 10 µg of rat tissue lysate by colorimetric immunoblot analysis using Goat anti-rat IgG:HRP as the secondary antibody.

Restrictions: For Research Use only

Handling

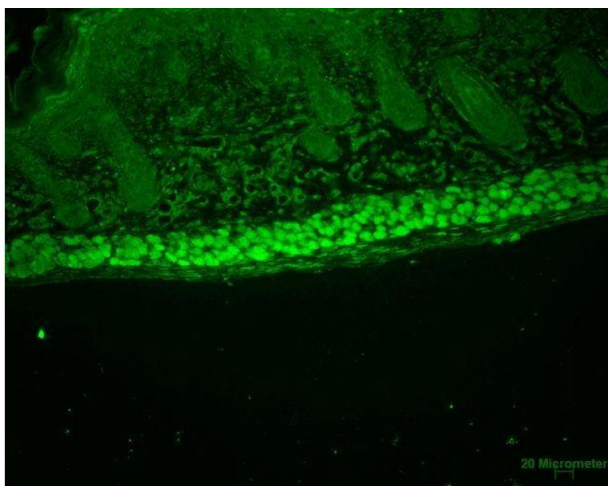
Format: Liquid

Concentration: 1.2 mg/mL

Buffer: 0.02M potassium phosphate, 0.15M sodium chloride, pH 7.2, Storage buffer may change when conjugated

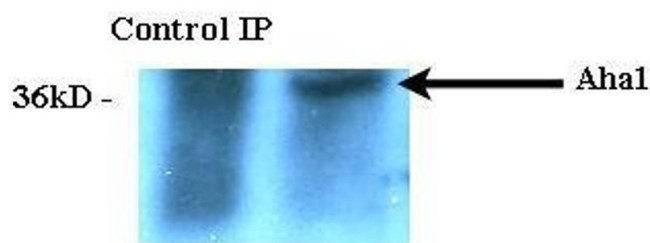
Storage: 4 °C

Storage Comment: Conjugated antibodies should be stored at 4°C



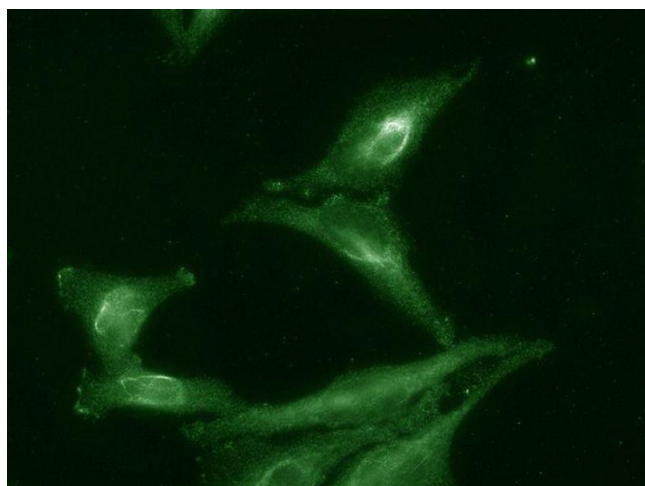
Immunohistochemistry

Image 1. Immunohistochemistry analysis using Rat Anti-Aha1 Monoclonal Antibody, Clone 25F2.D9 . Tissue: backskin. Species: Mouse. Fixation: Bouin's Fixative and paraffin-embedded. Primary Antibody: Rat Anti-Aha1 Monoclonal Antibody at 1:100 for 1 hour at RT. Secondary Antibody: FITC Goat Anti-Rat (green) at 1:50 for 1 hour at RT. Localization: Uppermost epidermis staining, and muscle.



Immunoprecipitation

Image 2. Immunoprecipitation analysis using Rat Anti-Aha1 Monoclonal Antibody, Clone 25F2.D9 . Tissue: HeLa cells. Species: Human. Primary Antibody: Rat Anti-Aha1 Monoclonal Antibody at 1:1000.



Immunofluorescence (fixed cells)

Image 3. Immunocytochemistry/Immunofluorescence analysis using Rat Anti-Aha1 Monoclonal Antibody, Clone 25F2.D9 . Tissue: HeLa cells. Species: Human. Primary Antibody: Rat Anti-Aha1 Monoclonal Antibody at 1:1000. Secondary Antibody: FITC Goat Anti-Rat (green).

Please check the [product details page](#) for more images. Overall 4 images are available for ABIN2481463.