

Datasheet for ABIN2481599
anti-KDELR antibody (AA 192-212) (Atto 594)[Go to Product page](#)

2 Images

Overview

Quantity:	100 µg
Target:	KDELR
Binding Specificity:	AA 192-212
Reactivity:	Cow
Host:	Mouse
Clonality:	Monoclonal
Conjugate:	This KDELR antibody is conjugated to Atto 594
Application:	Western Blotting (WB), Immunoprecipitation (IP), Immunohistochemistry (IHC), Immunocytochemistry (ICC), Immunofluorescence (IF)

Product Details

Immunogen:	A 21 residue synthetic peptide (amino acids 192-212) based on the bovine KDEL receptor and the peptide coupled to KLH
Clone:	KR-10
Isotype:	IgG1
Specificity:	Detects ~25 kDa.
Cross-Reactivity:	Chicken, Cow, Dog, Drosophila melanogaster, Hamster, Human, Monkey, Mouse, Pig, Rabbit, Rat, Sheep, Xenopus laevis
Purification:	Protein G Purified

Target Details

Target:	KDEL ^R
Alternative Name:	KDEL Receptor (KDEL^R Products)
Background:	<p>The endoplasmic reticulum is part of a protein sorting pathway, or in essence, the transportation system of the eukaryotic cell. The majority of endoplasmic reticulum resident proteins are retained in the endoplasmic reticulum through a retention motif. This motif is composed of four amino acids at the C-terminal end of the protein sequence. The most common retention sequence is KDEL (lys-asg-glu-leu). However, variation on KDEL does occur and other sequences can also give rise to endoplasmic reticulum retention (6). There are three KDEL receptors in mammalian cells, all have a very high degree of sequence identity, and all are located within the cis-Golgi and its intermediate compartments (4). In terms of function, KDEL receptors interact with GAP (GTPase-activating protein) of ARF1, which is involved in COPI dependent vesicle transport, and the KDEL receptor may also be responsible for the recruitment of this ARF1 to membranes which can then aid in the regulation of vesicle budding (3). It is also important to note that the KDEL receptor exhibits extensive sequence identity o yeast protein Erd2p, which is a receptor for the yeast ER retention signal (4, 5).</p>
Gene ID:	618184
NCBI Accession:	NP_001069963
UniProt:	P33946
Pathways:	Maintenance of Protein Location

Application Details

Application Notes:	<ul style="list-style-type: none">• WB (1:1000)• ICC/IF (1:1000)• optimal dilutions for assays should be determined by the user.
Comment:	1 µg/ml was sufficient for detection of KDEL receptor in 20 µg monkey Vero cell lysate by colorimetric immunoblot analysis using Goat Anti-Mouse IgG:AP as the secondary.
Restrictions:	For Research Use only

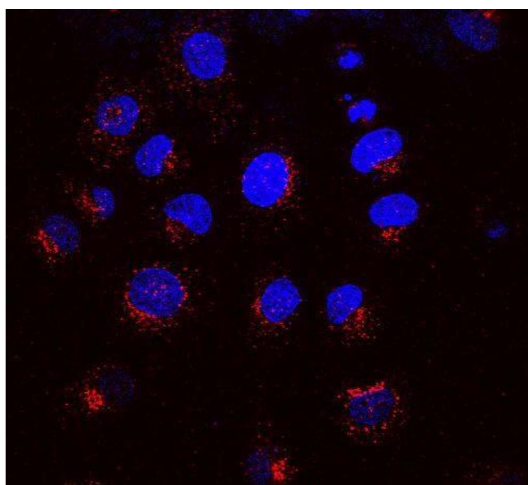
Handling

Format:	Liquid
Concentration:	1 mg/mL

Handling

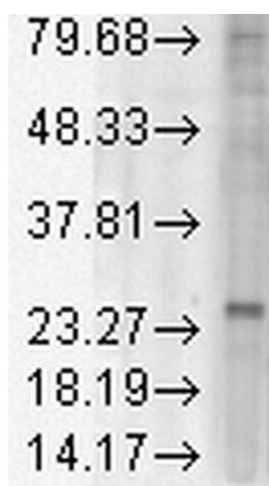
Buffer:	PBS pH 7.2, 50 % glycerol, 0.09 % sodium azide, Storage buffer may change when conjugated
Preservative:	Sodium azide
Precaution of Use:	This product contains Sodium azide: a POISONOUS AND HAZARDOUS SUBSTANCE which should be handled by trained staff only.
Storage:	4 °C
Storage Comment:	Conjugated antibodies should be stored at 4°C

Images



Immunofluorescence (fixed cells)

Image 1. Immunocytochemistry/Immunofluorescence analysis using Mouse Anti-KDEL Receptor Monoclonal Antibody, Clone KR-10 . Tissue: NRK cells. Species: Rat. Primary Antibody: Mouse Anti-KDEL Receptor Monoclonal Antibody at 1:1000. Secondary Antibody: APC Goat Anti-Mouse (red). Counterstain: DAPI (blue) nuclear stain. Courtesy of: Institute of Mol. and Cell Bio, Singapore.



Western Blotting

Image 2. Western Blot analysis of Rat tissue lysate showing detection of KDEL Receptor protein using Mouse Anti-KDEL Receptor Monoclonal Antibody, Clone KR-10 . Load: 15 µg. Block: 1.5% BSA for 30 minutes at RT. Primary Antibody: Mouse Anti-KDEL Receptor Monoclonal Antibody at 1:1000 for 2 hours at RT. Secondary Antibody: Sheep Anti-Mouse IgG: HRP for 1 hour at RT.