

Datasheet for ABIN2481931
anti-HSPE1 antibody (AA 91-101) (Biotin)[Go to Product page](#)

2 Images

Overview

Quantity:	100 µg
Target:	HSPE1
Binding Specificity:	AA 91-101
Reactivity:	Human
Host:	Rabbit
Clonality:	Polyclonal
Conjugate:	This HSPE1 antibody is conjugated to Biotin
Application:	Western Blotting (WB), ELISA, Immunohistochemistry (IHC), Immunoprecipitation (IP), Immunofluorescence (IF), Immunocytochemistry (ICC)

Product Details

Immunogen:	Human Cpn10 peptide AA 91-101
Specificity:	Detects ~ 10 kDa.
Cross-Reactivity:	Cow, Dog, Guinea Pig, Human, Mouse, Pig, Rabbit, Rat, Sheep, Xenopus laevis
Purification:	Protein A Purified

Target Details

Target:	HSPE1
Alternative Name:	Cpn10 (HSPE1 Products)
Background:	Chaperonin 10, otherwise known as Cpn10, (groES in E.coli) make up a family of small heart

Target Details

shock proteins with an approximate molecular mass of 10 kDa (HSP10s). Cpn10 acts as a co-chaperone and interacts with the HSP60 family to promote proper folding of polypeptides. Cpn10 and Cpn60 both exhibit sevenfold axis of symmetry and function as a team in the protein folding and assembly process (1). Cpn10 has been located in human platelets, but is also present in human maternal serum (2, 3). It has been reported that human Cpn10 is identical with early pregnancy factor, which is involved in control over cell growth and development. This identification suggest that Cpn10 may act like a hormone in stressful situations such as pregnancy (4).

Gene ID: 3336

NCBI Accession: [NP_002148](#)

UniProt: [P61604](#)

Pathways: [Positive Regulation of Endopeptidase Activity](#)

Application Details

Application Notes:

- WB (1:1000)
- IHC (1:100)
- optimal dilutions for assays should be determined by the user.

Comment: 1 µg/ml of ABIN2481931 was sufficient for detection of Cpn10 in 10 µg of Hela lysates by colorimetric immunoblot analysis using Goat anti-rabbit IgG:HRP as the secondary antibody.

Restrictions: For Research Use only

Handling

Format: Liquid

Concentration: 1 mg/mL

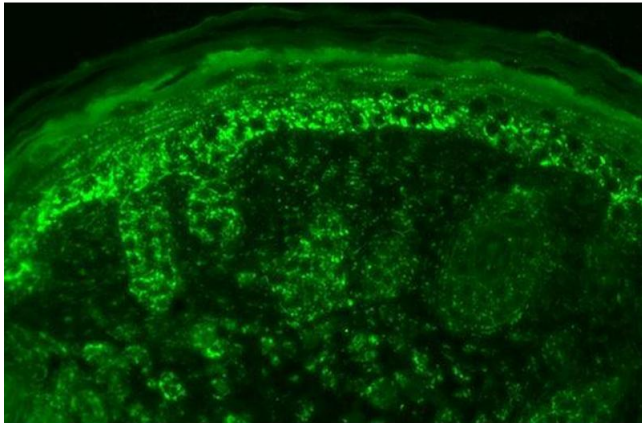
Buffer: PBS pH 7.3, 0.02 % sodium azide, Storage buffer may change when conjugated

Preservative: Sodium azide

Precaution of Use: This product contains Sodium azide: a POISONOUS AND HAZARDOUS SUBSTANCE which should be handled by trained staff only.

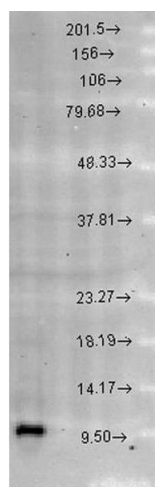
Storage: 4 °C

Storage Comment: Conjugated antibodies should be stored at 4°C



Immunohistochemistry

Image 1. Immunohistochemistry analysis using Rabbit Anti-Cpn10 Polyclonal Antibody . Tissue: backskin. Species: Mouse. Fixation: Bouin's Fixative Solution. Primary Antibody: Rabbit Anti-Cpn10 Polyclonal Antibody at 1:100 for 1 hour at RT. Secondary Antibody: FITC Goat Anti-Rabbit (green) at 1:50 for 1 hour at RT. Localization: Strong basal layer punctate staining in the cytoplasm, weakens as it ascends to upper epidermis..



Western Blotting

Image 2. Western blot analysis of Rat brain cell lysates showing detection of Cpn10 protein using Rabbit Anti-Cpn10 Polyclonal Antibody . Load: 15 µg protein. Block: 1.5% BSA for 30 minutes at RT. Primary Antibody: Rabbit Anti-Cpn10 Polyclonal Antibody at 1:1000 for 2 hours at RT. Secondary Antibody: Donkey Anti-Rabbit IgG: HRP for 1 hour at RT.