



[Go to Product page](#)

Datasheet for ABIN2482125  
**anti-POR antibody (APC)**

3 Images

### Overview

Quantity:	100 µg
Target:	POR
Reactivity:	Rat
Host:	Rabbit
Clonality:	Polyclonal
Conjugate:	This POR antibody is conjugated to APC
Application:	Western Blotting (WB), Immunohistochemistry (IHC), Immunofluorescence (IF), Immunocytochemistry (ICC)

### Product Details

Immunogen:	Rat native full-length Cytochrome P450 Reductase purified from liver tissue
Specificity:	Detects ~77 kDa.
Cross-Reactivity:	Human, Mouse, Rat
Purification:	Protein A Purified

### Target Details

Target:	POR
Alternative Name:	Cytochrome P450 Reductase ( <a href="#">POR Products</a> )
Background:	Cytochrome P450 Reductase is an enzyme that is required for the transfer of electrons from NADPH to cytochrome P450 in microsomes. It has also been found to transfer electrons to Heme oxygenase and cytochrome B5. Cytochrome P450 Reductase is found localized to the

## Target Details

---

endoplasmic reticulum membrane, tethered by its hydrophobic N-terminal tail. Mutations in the gene encoding Cytochrome P450 Reductase (POR) have been found to cause congenital adrenal hyperplasia, Antley-Bixler syndrome, amenorrhea and disordered steroidogenesis.

Gene ID: 29441

NCBI Accession: [NP\\_113764](#)

UniProt: [P00388](#)

Pathways: [Regulation of Hormone Metabolic Process](#), [Regulation of Hormone Biosynthetic Process](#), [SARS-CoV-2 Protein Interactome](#)

## Application Details

---

Application Notes:

- WB (1:1000)
- ICC/IF (1:60)
- optimal dilutions for assays should be determined by the user.

Comment: 1 µg/ml of ABIN2482125 was sufficient for detection of Cytochrome P450 in 10 µg of rat brain lysate by colorimetric immunoblot analysis using Goat anti-rabbit IgG:HRP as the secondary antibody.

Restrictions: For Research Use only

## Handling

---

Format: Liquid

Concentration: 1 mg/mL

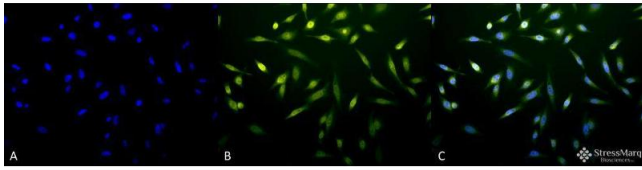
Buffer: PBS pH 7.4, 50 % glycerol, 0.09 % sodium azide, Storage buffer may change when conjugated

Preservative: Sodium azide

Precaution of Use: This product contains Sodium azide: a POISONOUS AND HAZARDOUS SUBSTANCE which should be handled by trained staff only.

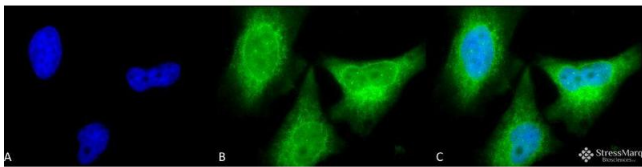
Storage: 4 °C

Storage Comment: Conjugated antibodies should be stored at 4°C



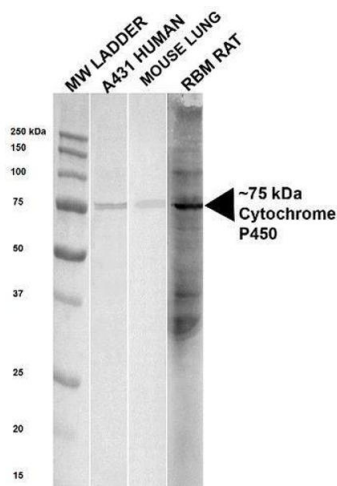
### Immunofluorescence (fixed cells)

**Image 1.** Immunocytochemistry/Immunofluorescence analysis using Rabbit Anti-Cytochrome P450 Reductase Polyclonal Antibody . Tissue: Heat Shocked HeLa Cells. Species: Human. Fixation: 2% Formaldehyde for 20 min at RT. Primary Antibody: Rabbit Anti-Cytochrome P450 Reductase Polyclonal Antibody at 1:60 for 12 hours at 4°C. Secondary Antibody: FITC Goat Anti-Rabbit (green) at 1:200 for 2 hours at RT. Counterstain: DAPI (blue) nuclear stain at 1:40000 for 2 hours at RT. Localization: Endoplasmic reticulum membrane. Cytosol. Magnification: 20x. (A) DAPI (blue) nuclear stain. (B) Anti-Cytochrome P450 Reductase Antibody. (C) Composite. Heat Shocked at 42°C for 1h.



### Immunofluorescence (fixed cells)

**Image 2.** Immunocytochemistry/Immunofluorescence analysis using Rabbit Anti-Cytochrome P450 Reductase Polyclonal Antibody . Tissue: HeLa Cells. Species: Human. Fixation: 2% Formaldehyde for 20 min at RT. Primary Antibody: Rabbit Anti-Cytochrome P450 Reductase Polyclonal Antibody at 1:150 for 12 hours at 4°C. Secondary Antibody: R-PE Goat Anti-Rabbit (yellow) at 1:200 for 2 hours at RT. Counterstain: DAPI (blue) nuclear stain at 1:40000 for 2 hours at RT. Localization: Endoplasmic reticulum membrane. Cytosol. Magnification: 100x. (A) DAPI (blue) nuclear stain. (B) Anti-Cytochrome P450 Reductase Antibody. (C) Composite.



### Western Blotting

**Image 3.** Western blot analysis of Human, Mouse, Rat Human, Mouse and Rat Lysates showing detection of ~ 75 kDa Cytochrome P450 Reductase protein using Rabbit Anti-Cytochrome P450 Reductase Polyclonal Antibody . Lane 1: MW ladder. Lane 2: Human lysate, A431. Lane 3: Mouse lung lysate. Lane 4: Rat lysate, Rat Brain Membrane (RBM). Load: 20 µg. Block: 5% milk + TBST for 1 hour at RT. Primary Antibody: Rabbit Anti-Cytochrome P450 Reductase Polyclonal Antibody at 1:1000 for 1 hour at RT. Secondary Antibody: Goat Anti-Rabbit HRP antibody at 1:2000 for 1 hour at RT. Color Development: TMB solution for 11 min at RT. Predicted/Observed Size: ~ 75 kDa. Other Band(s): ~30 - 250 in Rat lysate only.