



[Go to Product page](#)

Datasheet for ABIN2482294

## anti-DUX4 antibody (C-Term) (Alkaline Phosphatase (AP))

### 2 Images

#### Overview

Quantity:	100 µg
Target:	DUX4
Binding Specificity:	C-Term
Reactivity:	Human
Host:	Mouse
Clonality:	Monoclonal
Conjugate:	This DUX4 antibody is conjugated to Alkaline Phosphatase (AP)
Application:	Western Blotting (WB), Immunohistochemistry (IHC), Immunofluorescence (IF), Immunocytochemistry (ICC)

#### Product Details

Immunogen:	C-terminal 76 amino acids of DUX4 with glutathione-s-transferase (gst) tag
Clone:	P2B1
Isotype:	IgG1
Specificity:	Detects ~45 kDa. No cross-reactivity with DUX4c.
Cross-Reactivity:	Human, Mouse
Purification:	Protein G Purified

#### Target Details

Target:	DUX4
---------	------

## Target Details

---

Alternative Name:	DUX4 ( <a href="#">DUX4 Products</a> )
Background:	DUX4, or double homeobox4, is a human protein that is a transcriptional activator of paired-like homeodomain transcription factor 1 (1). Clinically it is a facioscapulohumeral muscular dystrophy candidate gene that appears to have a toxic gain of function (2-4). In FSHD individuals, the expression of the full-length DUX4 transcript is not completely suppressed in skeletal muscle and possibly other differentiated tissues (5).
Gene ID:	22947
NCBI Accession:	<a href="#">NP_149418</a>
UniProt:	<a href="#">F5GZ66</a>

## Application Details

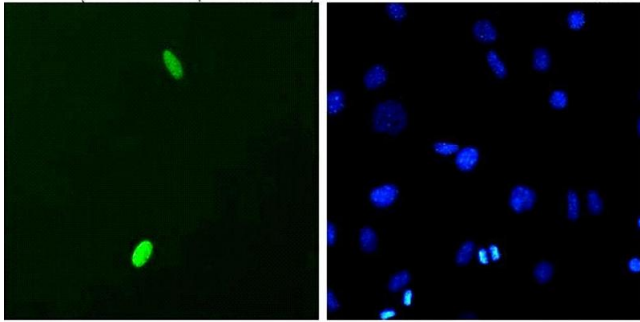
---

Application Notes:	<ul style="list-style-type: none"><li>• WB (1:1000)</li><li>• ICC/IF (1:1000)</li><li>• optimal dilutions for assays should be determined by the user.</li></ul>
Comment:	1 µg/ml of ABIN2482294 was sufficient for detection of DUX4 in 20 µg of HeLa cell lysate by ECL immunoblot analysis using goat anti-mouse IgG: HRP as the secondary.
Restrictions:	For Research Use only

## Handling

---

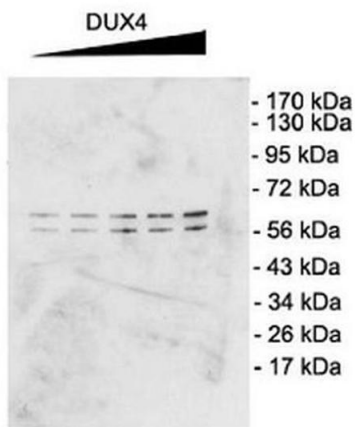
Format:	Liquid
Concentration:	1 mg/mL
Buffer:	PBS pH 7.4, 50 % glycerol, 0.09 % sodium azide, Storage buffer may change when conjugated
Preservative:	Sodium azide
Precaution of Use:	This product contains Sodium azide: a POISONOUS AND HAZARDOUS SUBSTANCE which should be handled by trained staff only.
Storage:	4 °C
Storage Comment:	Conjugated antibodies should be stored at 4°C



### Immunofluorescence (fixed cells)

**Image 1.** Immunocytochemistry/Immunofluorescence analysis using Mouse Anti-DUX4 Monoclonal Antibody, Clone P2B1 . Tissue: C2C12 myoblast cells. Species: Mouse. Primary Antibody: Mouse Anti-DUX4 Monoclonal Antibody at 1:1000. Secondary Antibody: FITC Goat Anti-Mouse (green). Counterstain: DAPI (blue) nuclear stain.

### P2G4 anti-DUX4 mouse monoclonal



### Western Blotting

**Image 2.** Western Blot analysis of Mouse C2C12 cell lysate showing detection of DUX4 protein using Mouse Anti-DUX4 Monoclonal Antibody, Clone P2B1 . Primary Antibody: Mouse Anti-DUX4 Monoclonal Antibody at 1:1000. Cells transfected with pCS2+DUX4 which, contains an additional upstream start site.